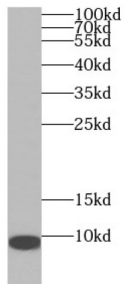
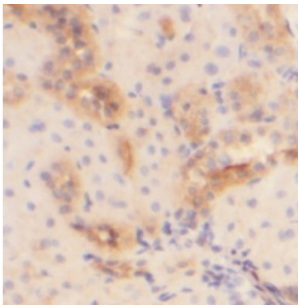


## Adrenomedullin (ADM) Antibody

Catalogue No.: abx230181



WB analysis of human kidney tissue, using ADM antibody (1/1000 dilution).



IHC-P analysis of human kidney tissue, using ADM Antibody (1/50 dilution).

Adrenomedullin Antibody is a Rabbit Polyclonal against Adrenomedullin.

**Target:** Adrenomedullin (ADM)

**Clonality:** Polyclonal

**Reactivity:** Human

**Tested Applications:** ELISA, WB, IHC

**Host:** Rabbit

**Recommended dilutions:** WB: 1/500 - 1/5000, IHC: 1/20 - 1/200, IF/ICC: 1/10 - 1/100. Optimal dilutions/concentrations should be determined by the end user.

**Conjugation:** Unconjugated

**Immunogen:** adrenomedullin

**Isotype:** IgG

**Form:** Liquid

**Purity:** ≥ 95% (SDS-PAGE)

# Datasheet

Version: 4.0.0  
Revision date: 31 Dec 2024



<b>Purification:</b>	Purified by immunogen affinity chromatography.
<b>Storage:</b>	Aliquot and store at -20°C. Avoid repeated freeze/thaw cycles.
<b>Validity:</b>	12 months.
<b>UniProt Primary AC:</b>	P35318 ( <a href="#">UniProt</a> , <a href="#">ExpASY</a> )
<b>Gene Symbol:</b>	ADM
<b>GeneID:</b>	<a href="#">133</a>
<b>OMIM:</b>	<a href="#">103275</a>
<b>HGNC:</b>	259
<b>KEGG:</b>	hsa:133
<b>Ensembl:</b>	ENSG00000148926
<b>String:</b>	<a href="#">9606.ENSP00000436607</a>
<b>Molecular Weight:</b>	Observed MW: 7 kDa
<b>Buffer:</b>	PBS, pH 7.3, with 0.02% sodium azide and 50% glycerol.
<b>Concentration:</b>	2 mg/ml
<b>Note:</b>	This product is for research use only.

For Reference Only