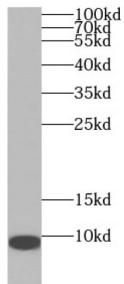
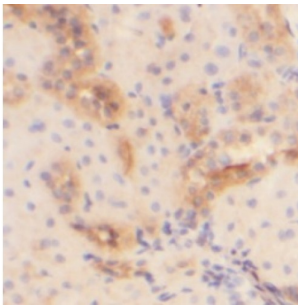


Adrenomedullin (ADM) Antibody

Catalogue No.: abx230181



WB analysis of human kidney tissue, using ADM antibody (1/1000 dilution).



IHC-P analysis of human kidney tissue, using ADM Antibody (1/50 dilution).

Adrenomedullin Antibody is a Rabbit Polyclonal against Adrenomedullin.

Target: Adrenomedullin (ADM)

Clonality: Polyclonal

Reactivity: Human

Tested Applications: ELISA, WB, IHC

Host: Rabbit

Recommended dilutions: WB: 1/500 - 1/5000, IHC: 1/20 - 1/200, IF/ICC: 1/10 - 1/100. Optimal dilutions/concentrations should be determined by the end user.

Conjugation: Unconjugated

Immunogen: adrenomedullin

Isotype: IgG

Form: Liquid

Purity: ≥ 95% (SDS-PAGE)

Datasheet

Version: 4.0.0
Revision date: 31 Dec 2024



| | |
|----------------------------|--|
| Purification: | Purified by immunogen affinity chromatography. |
| Storage: | Aliquot and store at -20°C. Avoid repeated freeze/thaw cycles. |
| Validity: | 12 months. |
| UniProt Primary AC: | P35318 (UniProt , ExpASY) |
| Gene Symbol: | ADM |
| GeneID: | 133 |
| OMIM: | 103275 |
| HGNC: | 259 |
| KEGG: | hsa:133 |
| Ensembl: | ENSG00000148926 |
| String: | 9606.ENSP00000436607 |
| Molecular Weight: | Observed MW: 7 kDa |
| Buffer: | PBS, pH 7.3, with 0.02% sodium azide and 50% glycerol. |
| Concentration: | 2 mg/ml |
| Note: | This product is for research use only. |

For Reference Only