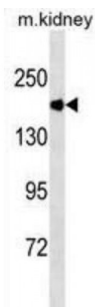


Angiotensin I Converting Enzyme (ACE) Antibody

Catalogue No.: abx025482



This gene encodes an enzyme involved in catalyzing the conversion of angiotensin I into a physiologically active peptide angiotensin II. Angiotensin II is a potent vasopressor and aldosterone-stimulating peptide that controls blood pressure and fluid-electrolyte balance. This enzyme plays a key role in the renin-angiotensin system. Many studies have associated the presence or absence of a 287 bp Alu repeat element in this gene with the levels of circulating enzyme or cardiovascular pathophysiology. Multiple alternatively spliced transcript variants encoding different isoforms have been identified, and two most abundant spliced variants encode the somatic form and the testicular form, respectively, that are equally active. This antibody is supplied as crude ascites.

Target:	Angiotensin I Converting Enzyme (ACE)
Clonality:	Monoclonal
Reactivity:	Mouse
Tested Applications:	ELISA, WB
Host:	Mouse
Recommended dilutions:	WB: 1/500 - 1/16000. Optimal dilutions/concentrations should be determined by the end user.
Conjugation:	Unconjugated
Immunogen:	KLH-conjugated synthetic peptide between 1274-1306 amino acids from human ACE.
Isotype:	IgG _{2a}
Form:	Liquid
Purification:	Unpurified crude ascites.
Storage:	Aliquot and store at -20°C. Avoid repeated freeze/thaw cycles.
UniProt Primary AC:	P12821 (UniProt , ExPASy)

Datasheet

Version: 2.0.0

Revision date: 27 Jul 2024



KEGG: hsa:1636

String: [9606.ENSP00000290866](#)

Molecular Weight: Calculated MW: 150 kDa

Buffer: Ascites containing 0.09% sodium azide.

Note: This product is for research use only.

For Reference Only