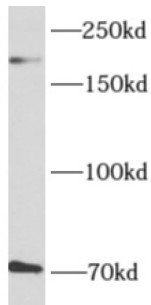


Datasheet

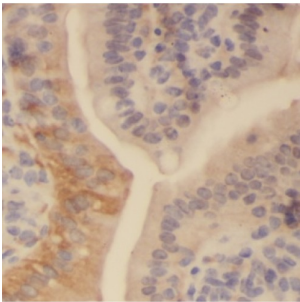
Version: 2.0.0
Revision date: 13 Mar 2025

A-Kinase Anchor Protein 12 (AKAP12) Antibody

Catalogue No.: abx230252



WB analysis of rat brain tissue, using AKAP12 antibody (1/600 dilution).



IHC-P analysis of human colon tissue, using AKAP12 Antibody (1/50 dilution).

AKAP12 Antibody is a Rabbit Polyclonal against AKAP12.

Target:	A-Kinase Anchor Protein 12 (AKAP12)
Clonality:	Polyclonal
Reactivity:	Human, Rat
Tested Applications:	ELISA, WB, IHC
Host:	Rabbit
Recommended dilutions:	WB: 1/200 - 1/2000, IHC: 1/20 - 1/200. Optimal dilutions/concentrations should be determined by the end user.
Conjugation:	Unconjugated
Immunogen:	A kinase (PRKA) anchor protein 12
Isotype:	IgG
Form:	Liquid
Purity:	≥ 95% (SDS-PAGE)

Datasheet

Version: 2.0.0
Revision date: 13 Mar 2025



Purification:	Purified by immunogen affinity chromatography.
Storage:	Aliquot and store at -20°C. Avoid repeated freeze/thaw cycles.
Validity:	12 months.
UniProt Primary AC:	Q02952 (UniProt , ExPASy)
Gene Symbol:	AKAP12
GeneID:	9590
KEGG:	hsa:9590
String:	9606.ENSP00000384537
Molecular Weight:	Observed MW: 191 kDa
Buffer:	PBS, pH 7.3, with 0.02% sodium azide and 50% glycerol.
Concentration:	2 mg/ml
Note:	THIS PRODUCT IS FOR RESEARCH USE ONLY. NOT FOR USE IN DIAGNOSTIC, THERAPEUTIC OR COSMETIC PROCEDURES. NOT FOR HUMAN OR ANIMAL CONSUMPTION.

For Reference Only