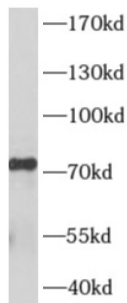


A-Kinase Anchor Protein 8 Like (AKAP8L) Antibody

Catalogue No.: abx230258



WB analysis of PC-3 cells, using AKAP8L antibody (1/300 dilution).

AKAP8L Antibody is a Rabbit Polyclonal against AKAP8L.

Target:	A-Kinase Anchor Protein 8 Like (AKAP8L)
Clonality:	Polyclonal
Reactivity:	Human
Tested Applications:	ELISA, WB, IF/ICC
Host:	Rabbit
Recommended dilutions:	WB: 1/200 - 1/2000, IF/ICC: 1/20 - 1/200. Optimal dilutions/concentrations should be determined by the end user.
Conjugation:	Unconjugated
Immunogen:	A kinase (PRKA) anchor protein 8-like
Isotype:	IgG
Form:	Liquid
Purity:	≥ 95% (SDS-PAGE)
Purification:	Purified by immunogen affinity chromatography.
Storage:	Aliquot and store at -20°C. Avoid repeated freeze/thaw cycles.
Validity:	12 months.
UniProt Primary AC:	Q9ULX6 (UniProt , ExPASy)

Datasheet

Version: 2.0.0
Revision date: 22 Dec 2024



Gene Symbol: AKAP8L

GeneID: [26993](#)

OMIM: [609475](#)

HGNC: 29857

Ensembl: ENSG00000011243

String: [9606.ENSP00000380557](#)

Molecular Weight: Observed MW: 72 kDa

Buffer: PBS, pH 7.3, with 0.02% sodium azide and 50% glycerol.

Concentration: 2 mg/ml

Note: This product is for research use only.

For Reference Only