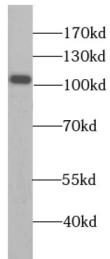
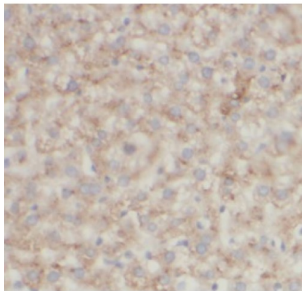


Alanine--TRNA Ligase, Cytoplasmic (AARS1) Antibody

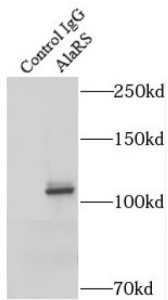
Catalogue No.: abx230276



WB analysis of HepG2 cells, using AARS antibody (1/400 dilution).



IHC-P analysis of human liver tissue, using AARS antibody (1/100 dilution).



IP analysis of HepG2 cell lysate (2400 µg), using AlaRS antibody (4 µg, detection: 1/500 dilution).

AlaRS Antibody is a Rabbit Polyclonal against AlaRS.

Target: Alanine--TRNA Ligase, Cytoplasmic (AARS1)

Clonality: Polyclonal

Reactivity: Human, Mouse, Rat

Tested Applications: ELISA, WB, IHC, IF/ICC, IP

Host: Rabbit

Recommended dilutions: WB: 1/200 - 1/1000, IHC: 1/20 - 1/200, IF/ICC: 1/20 - 1/200, IP: 1/200 - 1/2000. Optimal dilutions/concentrations should be determined by the end user.

Conjugation: Unconjugated

Datasheet

Version: 2.0.0
Revision date: 28 Dec 2024



Immunogen:	alanyl-tRNA synthetase
Isotype:	IgG
Form:	Liquid
Purity:	≥ 95% (SDS-PAGE)
Purification:	Purified by immunogen affinity chromatography.
Storage:	Aliquot and store at -20°C. Avoid repeated freeze/thaw cycles.
Validity:	12 months.
UniProt Primary AC:	P49588 (UniProt , ExpASY)
KEGG:	hsa:16
String:	9606.ENSP00000261772
Molecular Weight:	Observed MW: 107 kDa
Buffer:	PBS, pH 7.3, with 0.02% sodium azide and 50% glycerol.
Concentration:	2 mg/ml
Note:	This product is for research use only.

For Reference Only