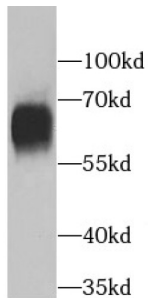
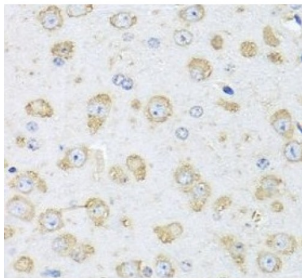


Albumin (ALB) Antibody

Catalogue No.: abx230278



WB analysis of human blood tissue, using ALB antibody (1/300 dilution).



IHC-P analysis of mouse brain tissue, using ALB antibody (1/100 dilution).

Albumin Antibody is a Rabbit Polyclonal against Albumin.

Target:	Albumin (ALB)
Clonality:	Polyclonal
Reactivity:	Human, Mouse, Rat
Tested Applications:	ELISA, WB, IHC, IF/ICC
Host:	Rabbit
Recommended dilutions:	WB: 1/50 - 1/200, IHC: 1/50 - 1/500, IF/ICC: 1/10 - 1/100. Optimal dilutions/concentrations should be determined by the end user.
Conjugation:	Unconjugated
Immunogen:	albumin
Isotype:	IgG
Form:	Liquid
Purity:	≥ 95% (SDS-PAGE)

Datasheet

Version: 4.0.0
Revision date: 19 Oct 2024



Purification:	Purified by immunogen affinity chromatography.
Storage:	Aliquot and store at -20°C. Avoid repeated freeze/thaw cycles.
Validity:	12 months.
UniProt Primary AC:	P02768 (UniProt , ExpASY)
KEGG:	hsa:213
String:	9606.ENSP00000295897
Molecular Weight:	Observed MW: 65 kDa
Buffer:	PBS, pH 7.3, with 0.02% sodium azide and 50% glycerol.
Concentration:	2 mg/ml
Note:	This product is for research use only.

For Reference Only