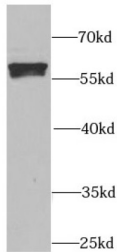
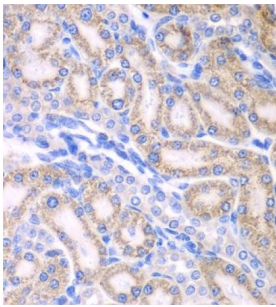


Aldehyde Dehydrogenase 1 Family Member A2 (ALDH1A2) Antibody

Catalogue No.: abx230285



WB analysis of mouse testis tissue, using ALDH1A2 antibody (1/1000 dilution).



IHC-P analysis of rat kidney tissue, using ALDH1A2 antibody (1/100 dilution).

ALDH1A2 Antibody is a Rabbit Polyclonal against ALDH1A2.

| | |
|-------------------------------|---|
| Target: | Aldehyde Dehydrogenase 1 Family Member A2 (ALDH1A2) |
| Clonality: | Polyclonal |
| Reactivity: | Human, Mouse, Rat |
| Tested Applications: | ELISA, WB, IHC |
| Host: | Rabbit |
| Recommended dilutions: | WB: 1/500 - 1/2000, IHC: 1/50 - 1/200. Optimal dilutions/concentrations should be determined by the end user. |
| Conjugation: | Unconjugated |
| Immunogen: | aldehyde dehydrogenase 1 family, member A2 |
| Isotype: | IgG |
| Form: | Liquid |
| Purity: | ≥ 95% (SDS-PAGE) |

Datasheet

Version: 2.0.0
Revision date: 12 Mar 2025



| | |
|----------------------------|--|
| Purification: | Purified by immunogen affinity chromatography. |
| Storage: | Aliquot and store at -20°C. Avoid repeated freeze/thaw cycles. |
| Validity: | 12 months. |
| UniProt Primary AC: | O94788 (UniProt , ExPASy) |
| KEGG: | hsa:8854 |
| String: | 9606.ENSP00000249750 |
| Molecular Weight: | Observed MW: 57 kDa |
| Buffer: | PBS, pH 7.3, with 0.02% sodium azide and 50% glycerol. |
| Concentration: | 2 mg/ml |
| Note: | THIS PRODUCT IS FOR RESEARCH USE ONLY. NOT FOR USE IN DIAGNOSTIC, THERAPEUTIC OR COSMETIC PROCEDURES. NOT FOR HUMAN OR ANIMAL CONSUMPTION. |

For Reference Only