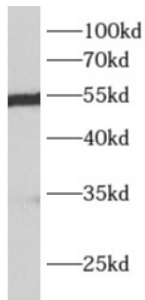
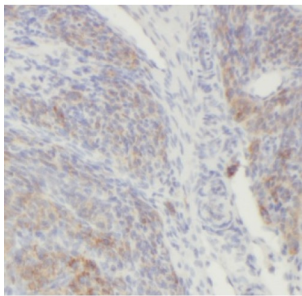


Aldehyde Dehydrogenase 7 Family Member A1 (ALDH7A1) Antibody

Catalogue No.: abx230299



WB analysis of mouse liver tissue, using ALDH7A1 antibody (1/1000 dilution).



IHC-P analysis of human ovary tumor tissue, using ALDH7A1 antibody (1/50 dilution).

ALDH7A1 Antibody is a Rabbit Polyclonal against ALDH7A1.

Target:	Aldehyde Dehydrogenase 7 Family Member A1 (ALDH7A1)
Clonality:	Polyclonal
Reactivity:	Human, Mouse, Rat
Tested Applications:	ELISA, WB, IHC
Host:	Rabbit
Recommended dilutions:	WB: 1/500 - 1/5000, IHC: 1/20 - 1/200. Optimal dilutions/concentrations should be determined by the end user.
Conjugation:	Unconjugated
Immunogen:	aldehyde dehydrogenase 7 family, member A1
Isotype:	IgG
Form:	Liquid
Purity:	≥ 95% (SDS-PAGE)

Datasheet

Version: 1.0.0
Revision date: 22 Dec 2024



Purification:	Purified by immunogen affinity chromatography.
Storage:	Aliquot and store at -20°C. Avoid repeated freeze/thaw cycles.
Validity:	12 months.
UniProt Primary AC:	P49419 (UniProt , ExpASY)
Gene Symbol:	ALDH7A1
GeneID:	501
OMIM:	107323
HGNC:	877
Ensembl:	ENSG00000164904
Molecular Weight:	Observed MW: 55 kDa
Buffer:	PBS, pH 7.3, with 0.02% sodium azide and 50% glycerol.
Concentration:	2 mg/ml
Note:	This product is for research use only.

For Reference Only