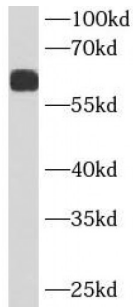
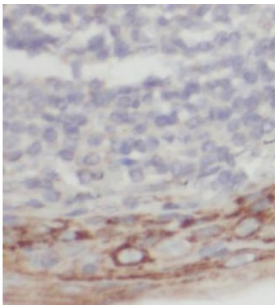


Alpha-1-Antichymotrypsin (SERPINA3) Antibody

Catalogue No.: abx230318



WB analysis of human blood tissue, using SERPINA3 antibody (1/5000 dilution).



IHC-P analysis of human tonsillitis tissue, using SERPINA3 antibody (1/200 dilution).

Alpha-1-Antichymotrypsin (SERPINA3) Antibody is a Mouse Monoclonal against Alpha-1-Antichymotrypsin (SERPINA3).

Target:	Alpha-1-Antichymotrypsin (SERPINA3)
Clonality:	Monoclonal
Reactivity:	Human
Tested Applications:	ELISA, WB, IHC
Host:	Mouse
Recommended dilutions:	WB: 1/1000 - 1/10000, IHC: 1/20 - 1/300. Optimal dilutions/concentrations should be determined by the end user.
Conjugation:	Unconjugated
Immunogen:	serpin peptidase inhibitor, clade A(alpha-1 antiproteinase, antitrypsin), member 3
Isotype:	IgG _{2b}
Form:	Liquid
Purity:	≥ 95% (SDS-PAGE)

Datasheet

Version: 2.0.0
Revision date: 08 Jun 2024



Purification:	Purified by Protein A and Protein G affinity chromatography.
Storage:	Aliquot and store at -20°C. Avoid repeated freeze/thaw cycles.
Validity:	12 months.
UniProt Primary AC:	P01011 (UniProt , ExpASY)
KEGG:	hsa:12
String:	9606.ENSP00000450540
Molecular Weight:	Observed MW: 60 kDa
Buffer:	PBS, pH 7.3, with 0.02% sodium azide and 50% glycerol.
Concentration:	2 mg/ml
Note:	This product is for research use only.

For Reference Only