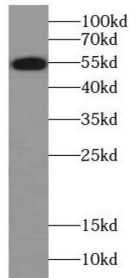


Alpha-2 Antiplasmin (SERPINF2) Antibody

Catalogue No.: abx230339



WB analysis of human liver tissue, using SERPINF2 antibody (1/500 dilution).

Alpha-2-antiplasmin Antibody is a Rabbit Polyclonal against Alpha-2-antiplasmin.

| | |
|-------------------------------|---|
| Target: | Alpha-2 Antiplasmin (SERPINF2) |
| Clonality: | Polyclonal |
| Reactivity: | Human, Mouse, Rat |
| Tested Applications: | ELISA, WB |
| Host: | Rabbit |
| Recommended dilutions: | WB: 1/500 - 1/2000. Optimal dilutions/concentrations should be determined by the end user. |
| Conjugation: | Unconjugated |
| Immunogen: | serpin peptidase inhibitor, clade F(alpha-2 antiplasmin, pigment epithelium derived factor), member 2 |
| Isotype: | IgG |
| Form: | Liquid |
| Purity: | ≥ 95% (SDS-PAGE) |
| Purification: | Purified by immunogen affinity chromatography. |
| Storage: | Aliquot and store at -20°C. Avoid repeated freeze/thaw cycles. |
| Validity: | 12 months. |
| UniProt Primary AC: | P08697 (UniProt , ExPASy) |

Datasheet

Version: 2.0.0
Revision date: 20 Dec 2024



Gene Symbol: SERPINF2

GeneID: [5345](#)

KEGG: hsa:5345

String: [9606.ENSP00000321853](#)

Molecular Weight: Observed MW: 54 kDa

Buffer: PBS, pH 7.3, with 0.02% sodium azide and 50% glycerol.

Concentration: 2 mg/ml

Note: This product is for research use only.

For Reference Only