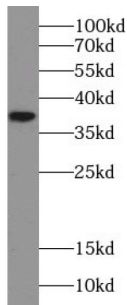


## Annexin A10 (ANXA10) Antibody

Catalogue No.: abx230427



WB analysis of U-251MG cells, using ANXA10 antibody (1/2000 dilution).

Annexin A10 Antibody is a Rabbit Polyclonal against Annexin A10.

<b>Target:</b>	Annexin A10 (ANXA10)
<b>Clonality:</b>	Polyclonal
<b>Reactivity:</b>	Human
<b>Tested Applications:</b>	ELISA, WB
<b>Host:</b>	Rabbit
<b>Recommended dilutions:</b>	WB: 1/500 - 1/2000. Optimal dilutions/concentrations should be determined by the end user.
<b>Conjugation:</b>	Unconjugated
<b>Immunogen:</b>	annexin A10
<b>Isotype:</b>	IgG
<b>Form:</b>	Liquid
<b>Purity:</b>	≥ 95% (SDS-PAGE)
<b>Purification:</b>	Purified by immunogen affinity chromatography.
<b>Storage:</b>	Aliquot and store at -20°C. Avoid repeated freeze/thaw cycles.
<b>Validity:</b>	12 months.
<b>UniProt Primary AC:</b>	Q9UJ72 ( <a href="#">UniProt</a> , <a href="#">ExPASy</a> )

# Datasheet

Version: 2.0.0  
Revision date: 28 Dec 2024



**Gene Symbol:** ANXA10

**GeneID:** [11199](#)

**OMIM:** [608008](#)

**HGNC:** 534

**Ensembl:** ENSG00000109511

**String:** [9606.ENSP00000352248](#)

**Molecular Weight:** Observed MW: 37 kDa

**Buffer:** PBS, pH 7.3, with 0.02% sodium azide and 50% glycerol.

**Concentration:** 2 mg/ml

**Note:** This product is for research use only.

For Reference Only