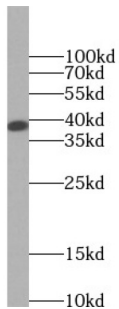
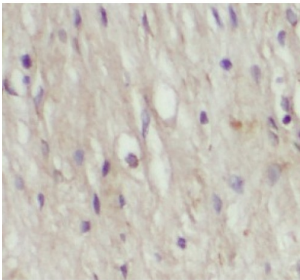


Annexin A2 (ANXA2) Antibody

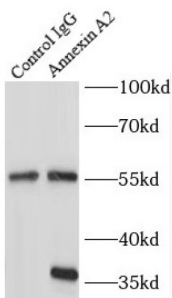
Catalogue No.: abx230431



WB analysis of K-562 cells, using ANXA2 antibody (1/1000 dilution).



IHC-P analysis of human breast cancer tissue, using ANXA2 Antibody (1/50 dilution).



IP analysis of HeLa cell lysate (2640 µg), using Annexin A2 antibody (4 µg, detection: 1/3000 dilution).

Annexin A2 Antibody is a Mouse Monoclonal against Annexin A2.

Target: Annexin A2 (ANXA2)

Clonality: Monoclonal

Reactivity: Human, Mouse

Tested Applications: ELISA, WB, IHC, IF/ICC, FCM, IP

Host: Mouse

Recommended dilutions: WB: 1/500 - 1/5000, IHC: 1/20 - 1/200, IF/ICC: 1/50 - 1/500, IP: 1/500 - 1/5000. Optimal dilutions/concentrations should be determined by the end user.

Conjugation: Unconjugated

Datasheet

Version: 2.0.0
Revision date: 04 Oct 2024



Immunogen:	annexin A2
Isotype:	IgG _{2b}
Form:	Liquid
Purity:	≥ 95% (SDS-PAGE)
Purification:	Purified by Protein A and Protein G affinity chromatography.
Storage:	Aliquot and store at -20°C. Avoid repeated freeze/thaw cycles.
Validity:	12 months.
UniProt Primary AC:	P07355 (UniProt , ExpASY)
Gene Symbol:	ANXA2
KEGG:	hsa:302
String:	9606.ENSP00000346032
Molecular Weight:	Observed MW: 39 kDa
Buffer:	PBS, pH 7.3, with 0.02% sodium azide and 50% glycerol.
Concentration:	2 mg/ml
Note:	This product is for research use only.

For Reference Only