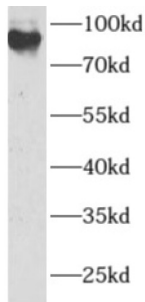
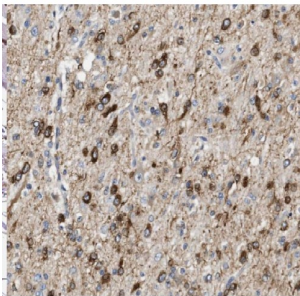


APC2, WNT Signaling Pathway Regulator (APC2) Antibody

Catalogue No.: abx230476



WB analysis of MCF7 cells, using ANAPC2 antibody (1/500 dilution).



IHC-P analysis of human glioma tissue, using ANAPC2 antibody (1/100 dilution).

APC2 Antibody is a Rabbit Polyclonal against APC2.

Target:	APC2, WNT Signaling Pathway Regulator (APC2)
Clonality:	Polyclonal
Reactivity:	Human, Mouse, Rat
Tested Applications:	ELISA, WB, IHC
Host:	Rabbit
Recommended dilutions:	WB: 1/500 - 1/2000, IHC: 1/20 - 1/200. Optimal dilutions/concentrations should be determined by the end user.
Conjugation:	Unconjugated
Immunogen:	anaphase promoting complex subunit 2
Isotype:	IgG
Form:	Liquid
Purity:	≥ 95% (SDS-PAGE)

Datasheet

Version: 4.0.0
Revision date: 25 Nov 2024



Purification:	Purified by immunogen affinity chromatography.
Storage:	Aliquot and store at -20°C. Avoid repeated freeze/thaw cycles.
Validity:	12 months.
UniProt Primary AC:	Q9UJX6 (UniProt , ExpASY)
Gene Symbol:	ANAPC2
GeneID:	29882
OMIM:	606946
HGNC:	19989
Ensembl:	ENSG00000176248
String:	9606.ENSP00000314004
Molecular Weight:	Observed MW: 97 kDa
Buffer:	PBS, pH 7.3, with 0.02% sodium azide and 50% glycerol.
Concentration:	2 mg/ml
Note:	This product is for research use only.

For Reference Only