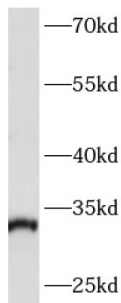
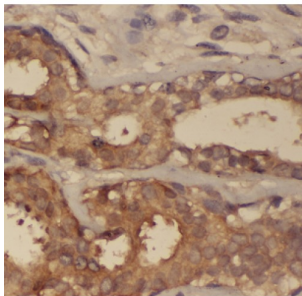


## Actin Related Protein 2/3 Complex Subunit 2 (ARPC2) Antibody

Catalogue No.: abx230601



WB analysis of MCF7 cells, using ARPC2 antibody (1/400 dilution).



IHC-P analysis of human breast cancer tissue, using ARPC2 antibody (1/100 dilution).

ARPC2 Antibody is a Rabbit Polyclonal against ARPC2.

<b>Target:</b>	Actin Related Protein 2/3 Complex Subunit 2 (ARPC2)
<b>Clonality:</b>	Polyclonal
<b>Reactivity:</b>	Human, Mouse, Rat
<b>Tested Applications:</b>	ELISA, WB, IHC, IF/ICC
<b>Host:</b>	Rabbit
<b>Recommended dilutions:</b>	WB: 1/500 - 1/2000, IHC: 1/20 - 1/200, IF/ICC: 1/20 - 1/200. Optimal dilutions/concentrations should be determined by the end user.
<b>Conjugation:</b>	Unconjugated
<b>Immunogen:</b>	actin related protein 2/3 complex, subunit 2, 34kDa
<b>Isotype:</b>	IgG
<b>Form:</b>	Liquid
<b>Purity:</b>	≥ 95% (SDS-PAGE)

# Datasheet

Version: 7.0.0  
Revision date: 11 Mar 2025



<b>Purification:</b>	Purified by immunogen affinity chromatography.
<b>Storage:</b>	Aliquot and store at -20°C. Avoid repeated freeze/thaw cycles.
<b>Validity:</b>	12 months.
<b>UniProt Primary AC:</b>	O15144 ( <a href="#">UniProt</a> , <a href="#">ExPASy</a> )
<b>Gene Symbol:</b>	ARPC2
<b>GeneID:</b>	<a href="#">10109</a>
<b>OMIM:</b>	<a href="#">604224</a>
<b>HGNC:</b>	705
<b>KEGG:</b>	hsa:10109
<b>Ensembl:</b>	ENSG00000163466
<b>String:</b>	<a href="#">9606.ENSP00000295685</a>
<b>Molecular Weight:</b>	Observed MW: 34 kDa
<b>Buffer:</b>	PBS, pH 7.3, with 0.02% sodium azide and 50% glycerol.
<b>Concentration:</b>	2 mg/ml
<b>Note:</b>	THIS PRODUCT IS FOR RESEARCH USE ONLY. NOT FOR USE IN DIAGNOSTIC, THERAPEUTIC OR COSMETIC PROCEDURES. NOT FOR HUMAN OR ANIMAL CONSUMPTION.

For Reference Only