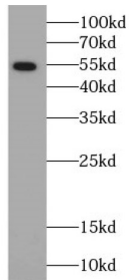


ARSK-Specific Antibody

Catalogue No.: abx230613



WB analysis of HeLa cells, using ARSK-Specific antibody (1/300 dilution).

ARSK-Specific Antibody is a Rabbit Polyclonal against ARSK-Specific.

Target:	ARSK-Specific
Clonality:	Polyclonal
Reactivity:	Human
Tested Applications:	ELISA, WB
Host:	Rabbit
Recommended dilutions:	WB: 1/500 - 1/2000. Optimal dilutions/concentrations should be determined by the end user.
Conjugation:	Unconjugated
Immunogen:	arylsulfatase family, member K
Isotype:	IgG
Form:	Liquid
Purity:	≥ 95% (SDS-PAGE)
Purification:	Purified by immunogen affinity chromatography.
Storage:	Aliquot and store at -20°C. Avoid repeated freeze/thaw cycles.
Validity:	12 months.
UniProt Primary AC:	Q6UWY0 (UniProt , ExPASy)

Datasheet

Version: 4.0.0
Revision date: 25 Nov 2024



Gene Symbol:	ARSK
GeneID:	153642
OMIM:	610011
HGNC:	25239
KEGG:	hsa:153642
Ensembl:	ENSG00000164291
String:	9606.ENSP00000369346
Molecular Weight:	Observed MW: 55 kDa
Buffer:	PBS, pH 7.3, with 0.02% sodium azide and 50% glycerol.
Concentration:	2 mg/ml
Note:	This product is for research use only.

For Reference Only