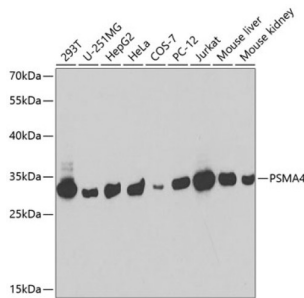
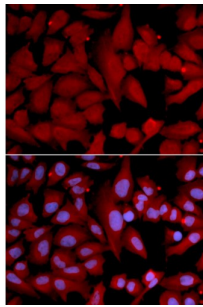


Proteasome Subunit Alpha Type 4 (PSMA4) Antibody

Catalogue No.: abx001953



Western blot analysis of extracts of various cell lines using PSMA4 antibody (1/1000 dilution).



Immunofluorescence analysis of U2OS cells using PSMA4 antibody. Blue: DAPI for nuclear staining.

PSMA4 Antibody is a Rabbit Polyclonal antibody against PSMA4. The proteasome is a multicatalytic proteinase complex with a highly ordered ring-shaped 20S core structure. The core structure is composed of 4 rings of 28 non-identical subunits; 2 rings are composed of 7 alpha subunits and 2 rings are composed of 7 beta subunits. Proteasomes are distributed throughout eukaryotic cells at a high concentration and cleave peptides in an ATP/ubiquitin-dependent process in a non-lysosomal pathway. An essential function of a modified proteasome, the immunoproteasome, is the processing of class I MHC peptides. This gene encodes a member of the peptidase T1A family, that is a 20S core alpha subunit. Three alternatively spliced transcript variants encoding different isoforms have been found for this gene.

Target: Proteasome Subunit Alpha Type 4 (PSMA4)

Clonality: Polyclonal

Reactivity: Human, Mouse, Rat

Tested Applications: WB, IF/ICC, IP

Host: Rabbit

Recommended dilutions: WB: 1/500 - 1/2000, IF/ICC: 1/50 - 1/200, IP: 1/50 - 1/100. Optimal dilutions/concentrations should be determined by the end user.

Conjugation: Unconjugated

Immunogen: Recombinant fusion protein containing a sequence corresponding to amino acids 1-261 of human PSMA4.

Datasheet

Version: 5.0.0
Revision date: 28 Dec 2024



Isotype:	IgG
Form:	Liquid
Purification:	Purified by affinity chromatography.
Storage:	Aliquot and store at -20°C. Avoid repeated freeze/thaw cycles.
UniProt Primary AC:	P25789 (UniProt , ExPASy)
Gene Symbol:	PSMA4
GeneID:	5685
NCBI Accession:	NP_001096137.1
KEGG:	hsa:5685
String:	9606.ENSP0000004462
Molecular Weight:	Calculated MW: 29 kDa Observed MW: 28 kDa
Buffer:	PBS, pH 7.3, containing 0.02% sodium azide, 50% glycerol.
Concentration:	0.44 mg/ml
Note:	This product is for research use only.

For Reference Only