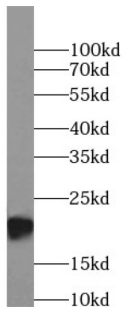
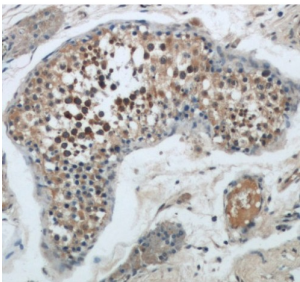


Bcl2 Associated X Protein (BAX) Antibody

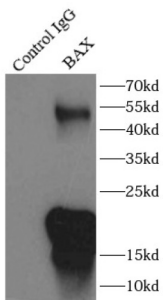
Catalogue No.: abx230810



WB analysis of HEK-293 cells, using BAX antibody (1/1000 dilution).



IHC-P analysis of human kidney tissue, using BAX Antibody (1/50 dilution).



IP analysis of Raji cell lysate (3500 µg), using BAX antibody (3 µg, detection: 1/2000 dilution).

BAX Antibody is a Rabbit Polyclonal against BAX.

Target: Bcl2 Associated X Protein (BAX)

Clonality: Polyclonal

Reactivity: Human, Mouse, Rat, Rabbit, Sheep

Tested Applications: ELISA, WB, IHC, FCM, IP

Host: Rabbit

Recommended dilutions: WB: 1/1000 - 1/10000, IHC: 1/20 - 1/200, IP: 1/1000 - 1/10000. Optimal dilutions/concentrations should be determined by the end user.

Conjugation: Unconjugated

Datasheet

Version: 2.0.0
Revision date: 18 Jan 2025



Immunogen:	BCL2-associated X protein
Isotype:	IgG
Form:	Liquid
Purity:	≥ 95% (SDS-PAGE)
Purification:	Purified by immunogen affinity chromatography.
Storage:	Aliquot and store at -20°C. Avoid repeated freeze/thaw cycles.
Validity:	12 months.
UniProt Primary AC:	Q07812 (UniProt , ExPASy)
Gene Symbol:	BAX
Molecular Weight:	Observed MW: 21 kDa
Buffer:	PBS, pH 7.3, with 0.02% sodium azide and 50% glycerol.
Concentration:	2 mg/ml
Note:	This product is for research use only.

For Reference Only