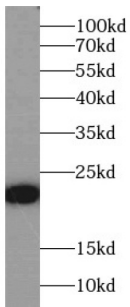
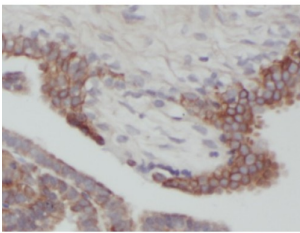


Bcl2 Associated X Protein (BAX) Antibody

Catalogue No.: abx230811



WB analysis of MCF-7 cells, using BAX antibody (1/4000 dilution).



IHC-P analysis of human breast cancer tissue, using BAX Antibody (1/800 dilution).

BAX Antibody is a Mouse Monoclonal against BAX.

Target:	Bcl2 Associated X Protein (BAX)
Clonality:	Monoclonal
Reactivity:	Human, Mouse, Rat
Tested Applications:	ELISA, WB, IHC, IF/ICC
Host:	Mouse
Recommended dilutions:	WB: 1/1000 - 1/10000, IHC: 1/400 - 1/1000, IF/ICC: 1/50 - 1/500. Optimal dilutions/concentrations should be determined by the end user.
Conjugation:	Unconjugated
Immunogen:	BCL2-associated X protein
Isotype:	IgG _{2a}
Form:	Liquid
Purity:	≥ 95% (SDS-PAGE)

Datasheet

Version: 2.0.0
Revision date: 23 Nov 2024



Purification:	Purified by Protein A and Protein G affinity chromatography.
Storage:	Aliquot and store at -20°C. Avoid repeated freeze/thaw cycles.
Validity:	12 months.
UniProt Primary AC:	Q07812 (UniProt , ExPASy)
Gene Symbol:	BAX
Molecular Weight:	Observed MW: 21 kDa
Buffer:	PBS, pH 7.3, with 0.02% sodium azide and 50% glycerol.
Concentration:	2 mg/ml
Note:	This product is for research use only.

For Reference Only