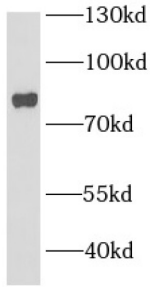
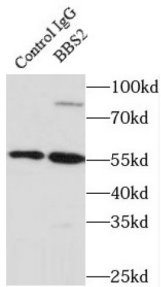


Bardet-Biedl Syndrome 2 Protein (BBS2) Antibody

Catalogue No.: abx230815



WB analysis of mouse testis tissue, using BBS2 antibody (1/500 dilution).



IP analysis of mouse testis tissue lysate (4000 µg), using BBS2 antibody (4 µg, detection: 1/300 dilution).

BBS2 Antibody is a Rabbit Polyclonal against BBS2.

Target: Bardet-Biedl Syndrome 2 Protein (BBS2)

Clonality: Polyclonal

Reactivity: Human, Mouse, Rat

Tested Applications: ELISA, WB, IF/ICC, IP

Host: Rabbit

Recommended dilutions: WB: 1/500 - 1/1000, IF/ICC: 1/20 - 1/200, IP: 1/200 - 1/1000. Optimal dilutions/concentrations should be determined by the end user.

Conjugation: Unconjugated

Immunogen: Bardet-Biedl syndrome 2

Isotype: IgG

Form: Liquid

Purity: ≥ 95% (SDS-PAGE)

Datasheet

Version: 3.0.0
Revision date: 23 Dec 2024



Purification:	Purified by immunogen affinity chromatography.
Storage:	Aliquot and store at -20°C. Avoid repeated freeze/thaw cycles.
Validity:	12 months.
UniProt Primary AC:	Q9BXC9 (UniProt , ExPASy)
Gene Symbol:	BBS2
GeneID:	583
OMIM:	606151
HGNC:	967
Ensembl:	ENSG00000125124
String:	9606.ENSP00000245157
Molecular Weight:	Observed MW: 80 kDa
Buffer:	PBS, pH 7.3, with 0.02% sodium azide and 50% glycerol.
Concentration:	2 mg/ml
Note:	This product is for research use only.

For Reference Only