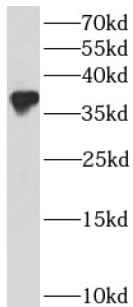
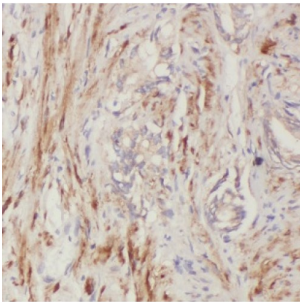


Bcl2 Like Protein 14 (BCL2L14) Antibody

Catalogue No.: abx230847



WB analysis of human lung tissue, using BCL2L14 antibody (1/500 dilution).



IHC-P analysis of human prostate cancer tissue, using BCL2L14 antibody (1/100 dilution).

BCL2L14 Antibody is a Rabbit Polyclonal against BCL2L14.

Target: Bcl2 Like Protein 14 (BCL2L14)

Clonality: Polyclonal

Reactivity: Human

Tested Applications: ELISA, WB, IHC

Host: Rabbit

Recommended dilutions: WB: 1/500 - 1/2000, IHC: 1/20 - 1/200. Optimal dilutions/concentrations should be determined by the end user.

Conjugation: Unconjugated

Immunogen: BCL2-like 14 (apoptosis facilitator)

Isotype: IgG

Form: Liquid

Purity: ≥ 95% (SDS-PAGE)

Datasheet

Version: 3.0.0
Revision date: 15 Jan 2025



Purification:	Purified by immunogen affinity chromatography.
Storage:	Aliquot and store at -20°C. Avoid repeated freeze/thaw cycles.
Validity:	12 months.
UniProt Primary AC:	Q9BZR8 (UniProt , ExPASy)
Gene Symbol:	BCL2L14
GeneID:	79370
OMIM:	606126
HGNC:	16657
Ensembl:	ENSG00000121380
String:	9606.ENSP00000309132
Molecular Weight:	Observed MW: 37 kDa
Buffer:	PBS, pH 7.3, with 0.02% sodium azide and 50% glycerol.
Concentration:	2 mg/ml
Note:	This product is for research use only.

For Reference Only