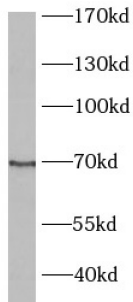
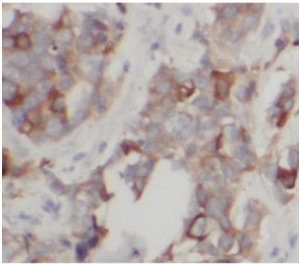


BCRP / ABCG2 Antibody

Catalogue No.: abx230855



WB analysis of mouse brain tissue, using BCRP,ABCG2 antibody (1/300 dilution).



IHC-P analysis of human breast cancer tissue, using BCRP,ABCG2 Antibody (1/100 dilution).

BCRP/ABCG2 Antibody is a Rabbit Polyclonal against BCRP/ABCG2.

Target:	BCRP/ABCG2
Clonality:	Polyclonal
Reactivity:	Human, Mouse
Tested Applications:	ELISA, WB, IHC
Host:	Rabbit
Recommended dilutions:	WB: 1/500 - 1/2000, IHC: 1/20 - 1/200. Optimal dilutions/concentrations should be determined by the end user.
Conjugation:	Unconjugated
Immunogen:	ATP-binding cassette, sub-family G(WHITE), member 2
Isotype:	IgG
Form:	Liquid
Purity:	≥ 95% (SDS-PAGE)

Datasheet

Version: 2.0.0
Revision date: 12 Dec 2024



Purification:	Purified by immunogen affinity chromatography.
Storage:	Aliquot and store at -20°C. Avoid repeated freeze/thaw cycles.
Validity:	12 months.
UniProt Primary AC:	Q9UNQ0 (UniProt , ExPASy)
Gene Symbol:	ABCG2
String:	9606.ENSP00000237612
Molecular Weight:	Observed MW: 60-70 kDa
Buffer:	PBS, pH 7.3, with 0.02% sodium azide and 50% glycerol.
Concentration:	2 mg/ml
Note:	This product is for research use only.

For Reference Only