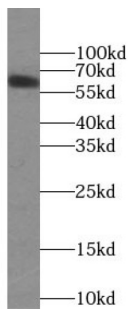


Butyrophilin-Like Protein 2 (BTNL2) Antibody

Catalogue No.: abx230985



WB analysis of HEK-293 cells, using BTNL2 antibody (1/600 dilution).

BTNL2 Antibody is a Rabbit Polyclonal against BTNL2.

Target:	Butyrophilin-Like Protein 2 (BTNL2)
Clonality:	Polyclonal
Reactivity:	Human, Mouse
Tested Applications:	ELISA, WB
Host:	Rabbit
Recommended dilutions:	WB: 1/500 - 1/1000. Optimal dilutions/concentrations should be determined by the end user.
Conjugation:	Unconjugated
Immunogen:	butyrophilin-like 2
Isotype:	IgG
Form:	Liquid
Purity:	≥ 95% (SDS-PAGE)
Purification:	Purified by immunogen affinity chromatography.
Storage:	Aliquot and store at -20°C. Avoid repeated freeze/thaw cycles.
Validity:	12 months.
UniProt Primary AC:	Q9UIR0 (UniProt , ExpASY)

Datasheet

Version: 1.0.0
Revision date: 11 Feb 2025



Gene Symbol: BTNL2

GeneID: [56244](#)

OMIM: [606000](#)

HGNC: 1142

Ensembl: ENSG00000204290

String: [9606.ENSP00000390613](#)

Molecular Weight: Observed MW: 65 kDa

Buffer: PBS, pH 7.3, with 0.02% sodium azide and 50% glycerol.

Concentration: 2 mg/ml

Note: This product is for research use only.

For Reference Only