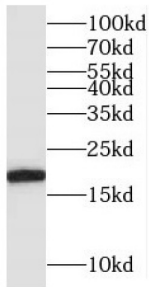
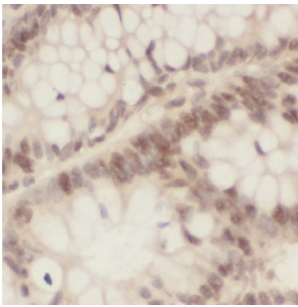


Protein BUD31 Homolog (BUD31) Antibody

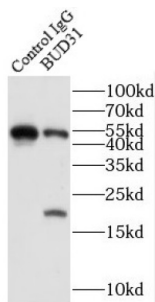
Catalogue No.: abx230991



WB analysis of mouse brain tissue, using BUD31 antibody (1/2000 dilution).



IHC-P analysis of human colon cancer tissue, using BUD31 antibody (1/100 dilution).



IP analysis of mouse brain tissue lysate (3440 µg), using BUD31 antibody (4 µg, detection: 1/1500 dilution).

BUD31 Antibody is a Rabbit Polyclonal against BUD31.

Target: Protein BUD31 Homolog (BUD31)

Clonality: Polyclonal

Reactivity: Human, Mouse, Rat

Tested Applications: ELISA, WB, IHC, IP

Host: Rabbit

Recommended dilutions: WB: 1/500 - 1/2000, IHC: 1/20 - 1/200, IP: 1/500 - 1/2000. Optimal dilutions/concentrations should be determined by the end user.

Conjugation: Unconjugated

Datasheet

Version: 4.0.0
Revision date: 19 Oct 2024



Immunogen:	BUD31 homolog(S. cerevisiae)
Isotype:	IgG
Form:	Liquid
Purity:	≥ 95% (SDS-PAGE)
Purification:	Purified by immunogen affinity chromatography.
Storage:	Aliquot and store at -20°C. Avoid repeated freeze/thaw cycles.
Validity:	12 months.
UniProt Primary AC:	P41223 (UniProt , ExpASY)
Gene Symbol:	BUD31
GeneID:	8896
OMIM:	603477
HGNC:	29629
KEGG:	hsa:8896
Ensembl:	ENSG00000106245
String:	9606.ENSP00000386023
Molecular Weight:	Observed MW: 17-20 kDa
Buffer:	PBS, pH 7.3, with 0.02% sodium azide and 50% glycerol.
Concentration:	2 mg/ml
Note:	This product is for research use only.