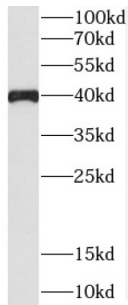
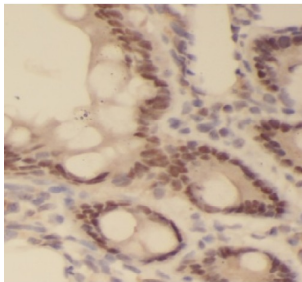


C5orf4 Antibody

Catalogue No.: abx231121



WB analysis of COLO 320 cells, using C5orf4 antibody (1/300 dilution).



IHC-P analysis of human kidney tissue, using C5orf4 Antibody (1/50 dilution).

C5orf4 Antibody is a Rabbit Polyclonal against C5orf4.

Target:	C5orf4
Clonality:	Polyclonal
Reactivity:	Human
Tested Applications:	ELISA, WB, IHC
Host:	Rabbit
Recommended dilutions:	WB: 1/500 - 1/2000, IHC: 1/20 - 1/200. Optimal dilutions/concentrations should be determined by the end user.
Conjugation:	Unconjugated
Immunogen:	chromosome 5 open reading frame 4
Isotype:	IgG
Form:	Liquid
Purity:	≥ 95% (SDS-PAGE)

Datasheet

Version: 1.0.0
Revision date: 16 Feb 2025



Purification:	Purified by immunogen affinity chromatography.
Storage:	Aliquot and store at -20°C. Avoid repeated freeze/thaw cycles.
Validity:	12 months.
UniProt Primary AC:	Q96IV6 (UniProt , ExPASy)
Gene Symbol:	FAXDC2
GeneID:	10826
HGNC:	1334
KEGG:	hsa:10826
Ensembl:	ENSG00000170271
String:	9606.ENSP00000320604
Molecular Weight:	Observed MW: 40 kDa
Buffer:	PBS, pH 7.3, with 0.02% sodium azide and 50% glycerol.
Concentration:	2 mg/ml
Note:	This product is for research use only.

For Reference Only