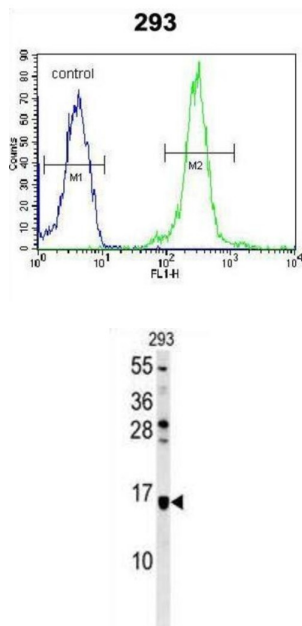


LOC552889 Antibody

Catalogue No.: abx025576



LOC552889 Antibody is a Rabbit Polyclonal antibody against LOC552889.

Target: LOC552889

Clonality: Polyclonal

Reactivity: Human

Tested Applications: ELISA, WB, FCM

Host: Rabbit

Recommended dilutions: WB: 1/1000, FCM: 1/10 - 1/50. Optimal dilutions/concentrations should be determined by the end user.

Conjugation: Unconjugated

Immunogen: KLH-conjugated synthetic peptide between 32-62 amino acids from the Central region of human LOC552889.

Isotype: IgG

Form: Liquid

Purification: Purified through a protein A column, followed by peptide affinity purification.

Datasheet

Version: 2.0.0
Revision date: 23 Feb 2025



Storage: Aliquot and store at -20°C. Avoid repeated freeze/thaw cycles.

UniProt Primary AC: Q96GX2 ([UniProt](#), [ExPASy](#))

KEGG: hsa:552889

String: [9606.ENSP00000430000](#)

Molecular Weight: Calculated MW: 10.8 kDa

Buffer: PBS containing 0.09% sodium azide.

Note: This product is for research use only.

For Reference Only