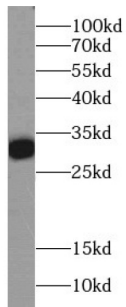
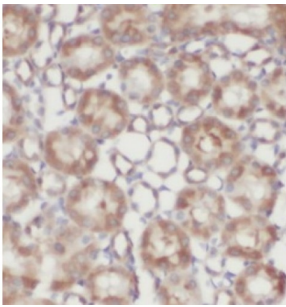


## Calbindin (CALB1) Antibody

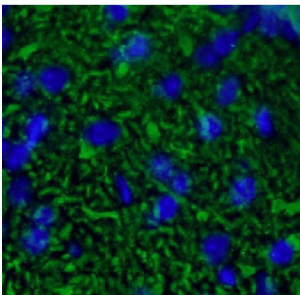
Catalogue No.: abx231193



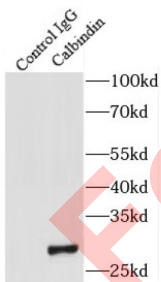
WB analysis of mouse brain tissue, using Calbindin-D28k antibody (1/1000 dilution).



IHC-P analysis of human kidney tissue, using Calbindin-D28k antibody (1/100 dilution).



IF analysis of 4% PFA-fixed mouse cerebellum tissue, using Calbindin-D28k antibody (1/100 dilution) and AF488-conjugated Goat Anti-Rabbit IgG (H+L).



IP analysis of mouse brain tissue lysate (4000 µg), using Calbindin-D28k antibody (4 µg, detection: 1/1000 dilution).

Calbindin Antibody is a Rabbit Polyclonal against Calbindin.

**Target:** Calbindin (CALB1)

**Clonality:** Polyclonal

**Reactivity:** Human, Mouse, Rat

# Datasheet

Version: 2.0.0  
Revision date: 12 Mar 2025



<b>Tested Applications:</b>	ELISA, WB, IHC, IF/ICC, IP
<b>Host:</b>	Rabbit
<b>Recommended dilutions:</b>	WB: 1/500 - 1/2000, IHC: 1/50 - 1/500, IF/ICC: 1/50 - 1/500, IP: 1/500 - 1/2000. Optimal dilutions/concentrations should be determined by the end user.
<b>Conjugation:</b>	Unconjugated
<b>Immunogen:</b>	calbindin 1, 28kDa
<b>Isotype:</b>	IgG
<b>Form:</b>	Liquid
<b>Purity:</b>	≥ 95% (SDS-PAGE)
<b>Purification:</b>	Purified by immunogen affinity chromatography.
<b>Storage:</b>	Aliquot and store at -20°C. Avoid repeated freeze/thaw cycles.
<b>Validity:</b>	12 months.
<b>UniProt Primary AC:</b>	P05937 ( <a href="#">UniProt</a> , <a href="#">ExPASy</a> )
<b>KEGG:</b>	hsa:793
<b>String:</b>	<a href="#">9606.ENSP00000265431</a>
<b>Molecular Weight:</b>	Observed MW: 30 kDa
<b>Buffer:</b>	PBS, pH 7.3, with 0.02% sodium azide and 50% glycerol.
<b>Concentration:</b>	2 mg/ml
<b>Note:</b>	THIS PRODUCT IS FOR RESEARCH USE ONLY. NOT FOR USE IN DIAGNOSTIC, THERAPEUTIC OR COSMETIC PROCEDURES. NOT FOR HUMAN OR ANIMAL CONSUMPTION.