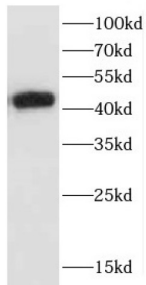
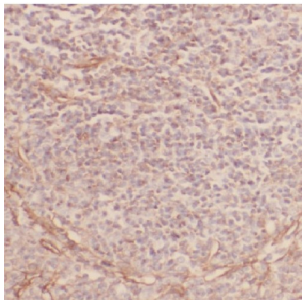


Chemokine C-C-Motif Receptor 10 (CCR10) Antibody

Catalogue No.: abx231389



WB analysis of mouse brain tissue, using CCR10 antibody (1/1000 dilution).



IHC-P analysis of human spleen tissue, using CCR10 antibody (1/50 dilution).

CCR10 Antibody is a Rabbit Polyclonal against CCR10.

Target:	Chemokine C-C-Motif Receptor 10 (CCR10)
Clonality:	Polyclonal
Reactivity:	Human, Mouse
Tested Applications:	ELISA, WB, IHC, FCM
Host:	Rabbit
Recommended dilutions:	WB: 1/500 - 1/2000, IHC: 1/20 - 1/200. Optimal dilutions/concentrations should be determined by the end user.
Conjugation:	Unconjugated
Immunogen:	chemokine (C-C motif) receptor 10
Isotype:	IgG
Form:	Liquid
Purity:	≥ 95% (SDS-PAGE)

Datasheet

Version: 3.0.0
Revision date: 13 Mar 2025



Purification:	Purified by immunogen affinity chromatography.
Storage:	Aliquot and store at -20°C. Avoid repeated freeze/thaw cycles.
Validity:	12 months.
UniProt Primary AC:	P46092 (UniProt , ExPASy)
Gene Symbol:	CCR10
GeneID:	2826
OMIM:	600240
HGNC:	4474
KEGG:	hsa:2826
Ensembl:	ENSG00000184451
String:	9606.ENSP00000332504
Molecular Weight:	Observed MW: 42 kDa
Buffer:	PBS, pH 7.3, with 0.02% sodium azide and 50% glycerol.
Concentration:	2 mg/ml
Note:	THIS PRODUCT IS FOR RESEARCH USE ONLY. NOT FOR USE IN DIAGNOSTIC, THERAPEUTIC OR COSMETIC PROCEDURES. NOT FOR HUMAN OR ANIMAL CONSUMPTION.

For Reference Only