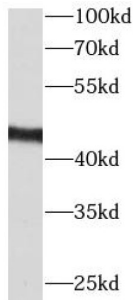


Chemokine C-C-Motif Receptor Like Protein 2 (CCRL2) Antibody

Catalogue No.: abx231393



WB analysis of A431 cells, using CCRL2 antibody (1/1000 dilution).

CCRL2 Antibody is a Rabbit Polyclonal against CCRL2.

Target:	Chemokine C-C-Motif Receptor Like Protein 2 (CCRL2)
Clonality:	Polyclonal
Reactivity:	Human, Mouse
Tested Applications:	ELISA, WB, FCM
Host:	Rabbit
Recommended dilutions:	WB: 1/500 - 1/5000. Optimal dilutions/concentrations should be determined by the end user.
Conjugation:	Unconjugated
Immunogen:	chemokine(C-C motif) receptor-like 2
Isotype:	IgG
Form:	Liquid
Purity:	≥ 95% (SDS-PAGE)
Purification:	Purified by immunogen affinity chromatography.
Storage:	Aliquot and store at -20°C. Avoid repeated freeze/thaw cycles.
Validity:	12 months.
UniProt Primary AC:	O00421 (UniProt , ExPASy)

Datasheet

Version: 1.0.0
Revision date: 13 Mar 2025



Gene Symbol: CCRL2

GeneID: [9034](#)

OMIM: [608379](#)

HGNC: 1612

KEGG: hsa:9034

Ensembl: ENSG00000121797

String: [9606.ENSP00000349967](#)

Molecular Weight: Observed MW: 47 kDa

Buffer: PBS, pH 7.3, with 0.02% sodium azide and 50% glycerol.

Concentration: 2 mg/ml

Note: THIS PRODUCT IS FOR RESEARCH USE ONLY. NOT FOR USE IN DIAGNOSTIC, THERAPEUTIC OR COSMETIC PROCEDURES. NOT FOR HUMAN OR ANIMAL CONSUMPTION.

For Reference Only