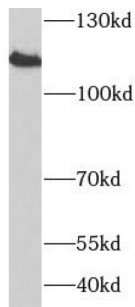


## Prominin 1 (PROM1) Antibody

Catalogue No.: abx231419



WB analysis of mouse kidney tissue, using CD133 antibody (1/1000 dilution).

CD133 Antibody is a Rabbit Polyclonal against CD133.

**Target:** Prominin 1 (PROM1)**Clonality:** Polyclonal**Reactivity:** Human, Mouse, Rat**Tested Applications:** ELISA, WB, FCM**Host:** Rabbit**Recommended dilutions:** WB: 1/500 - 1/2000. Optimal dilutions/concentrations should be determined by the end user.**Conjugation:** Unconjugated**Immunogen:** prominin 1**Isotype:** IgG**Form:** Liquid**Purity:** ≥ 95% (SDS-PAGE)**Purification:** Purified by immunogen affinity chromatography.**Storage:** Aliquot and store at -20°C. Avoid repeated freeze/thaw cycles.**Validity:** 12 months.**UniProt Primary AC:** O43490 ([UniProt](#), [ExPASy](#))

# Datasheet

Version: 1.0.0  
Revision date: 15 Jan 2025



<b>Gene Symbol:</b>	PROM1
<b>GeneID:</b>	<a href="#">8842</a>
<b>OMIM:</b>	<a href="#">604365</a>
<b>HGNC:</b>	9454
<b>KEGG:</b>	hsa:8842
<b>Ensembl:</b>	ENSG00000007062
<b>String:</b>	<a href="#">9606.ENSP00000426809</a>
<b>Molecular Weight:</b>	Observed MW: 115 kDa -120 kDa
<b>Buffer:</b>	PBS, pH 7.3, with 0.02% sodium azide and 50% glycerol.
<b>Concentration:</b>	2 mg/ml
<b>Note:</b>	This product is for research use only.

For Reference Only