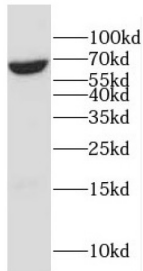
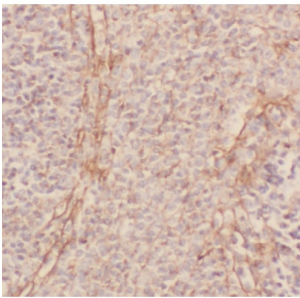


Myeloid Cell Surface Antigen CD33 (CD33) Antibody

Catalogue No.: abx231467



WB analysis of K-562 cells, using CD33 antibody (1/600 dilution).



IHC-P analysis of human spleen tissue, using CD33 antibody (1/100 dilution).

CD33 Antibody is a Rabbit Polyclonal against CD33.

Target:	Myeloid Cell Surface Antigen CD33 (CD33)
Clonality:	Polyclonal
Reactivity:	Human
Tested Applications:	ELISA, WB, IHC, IF/ICC
Host:	Rabbit
Recommended dilutions:	WB: 1/500 - 1/2000, IHC: 1/20 - 1/200, IF/ICC: 1/20 - 1/200. Optimal dilutions/concentrations should be determined by the end user.
Conjugation:	Unconjugated
Immunogen:	CD33 molecule
Isotype:	IgG
Form:	Liquid
Purity:	≥ 95% (SDS-PAGE)

Datasheet

Version: 2.0.0
Revision date: 12 Mar 2025



Purification:	Purified by immunogen affinity chromatography.
Storage:	Aliquot and store at -20°C. Avoid repeated freeze/thaw cycles.
Validity:	12 months.
UniProt Primary AC:	P20138 (UniProt , ExPASy)
Gene Symbol:	CD33
KEGG:	hsa:945
String:	9606.ENSP00000262262
Molecular Weight:	Observed MW: 67 kDa
Buffer:	PBS, pH 7.3, with 0.02% sodium azide and 50% glycerol.
Concentration:	2 mg/ml
Note:	THIS PRODUCT IS FOR RESEARCH USE ONLY. NOT FOR USE IN DIAGNOSTIC, THERAPEUTIC OR COSMETIC PROCEDURES. NOT FOR HUMAN OR ANIMAL CONSUMPTION.

For Reference Only