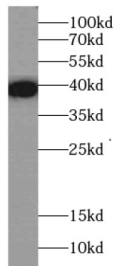


## Natural Cytotoxicity Triggering Receptor 2 (NCR2) Antibody

Catalogue No.: abx231468



WB analysis of human spleen tissue, using CD336 antibody (1/500 dilution).

CD336 Antibody is a Rabbit Polyclonal against CD336.

<b>Target:</b>	Natural Cytotoxicity Triggering Receptor 2 (NCR2)
<b>Clonality:</b>	Polyclonal
<b>Reactivity:</b>	Human
<b>Tested Applications:</b>	ELISA, WB
<b>Host:</b>	Rabbit
<b>Recommended dilutions:</b>	WB: 1/500 - 1/1000. Optimal dilutions/concentrations should be determined by the end user.
<b>Conjugation:</b>	Unconjugated
<b>Immunogen:</b>	natural cytotoxicity triggering receptor 2
<b>Isotype:</b>	IgG
<b>Form:</b>	Liquid
<b>Purity:</b>	≥ 95% (SDS-PAGE)
<b>Purification:</b>	Purified by immunogen affinity chromatography.
<b>Storage:</b>	Aliquot and store at -20°C. Avoid repeated freeze/thaw cycles.
<b>Validity:</b>	12 months.
<b>UniProt Primary AC:</b>	O95944 ( <a href="#">UniProt</a> , <a href="#">ExPASy</a> )

# Datasheet

Version: 1.0.0  
Revision date: 04 Dec 2024



**KEGG:** hsa:9436

**String:** [9606.ENSP00000362181](#)

**Molecular Weight:** Observed MW: 40 kDa

**Buffer:** PBS, pH 7.3, with 0.02% sodium azide and 50% glycerol.

**Concentration:** 2 mg/ml

**Note:** This product is for research use only.

For Reference Only