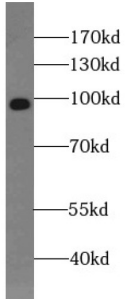
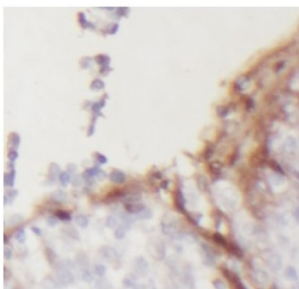


Ectonucleoside Triphosphate Diphosphohydrolase 1 (ENTPD1) Antibody

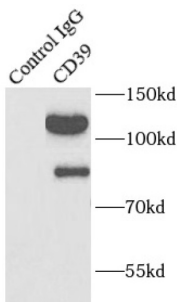
Catalogue No.: abx231474



WB analysis of Jurkat cells, using ENTPD1 antibody (1/500 dilution).



IHC-P analysis of human tonsillitis tissue, using ENTPD1 antibody (1/50 dilution).



IP analysis of mouse liver tissue lysate (4000 µg), using ENTPD1 antibody (4 µg, detection: 1/800 dilution).

CD39 Antibody is a Rabbit Polyclonal against CD39.

Target: Ectonucleoside Triphosphate Diphosphohydrolase 1 (ENTPD1)

Clonality: Polyclonal

Reactivity: Human, Mouse, Rat

Tested Applications: ELISA, WB, IHC, FCM, IP

Host: Rabbit

Recommended dilutions: WB: 1/500 - 1/2000, IHC: 1/20 - 1/200, IP: 1/200 - 1/1000. Optimal dilutions/concentrations should be determined by the end user.

Datasheet

Version: 3.0.0
Revision date: 23 Feb 2025



Conjugation:	Unconjugated
Immunogen:	ectonucleoside triphosphate diphosphohydrolase 1
Isotype:	IgG
Form:	Liquid
Purity:	≥ 95% (SDS-PAGE)
Purification:	Purified by immunogen affinity chromatography.
Storage:	Aliquot and store at -20°C. Avoid repeated freeze/thaw cycles.
Validity:	12 months.
UniProt Primary AC:	P49961 (UniProt , ExPASy)
Gene Symbol:	ENTPD1
KEGG:	hsa:953
String:	9606.ENSP00000360250
Molecular Weight:	Observed MW: 75-95 kDa
Buffer:	PBS, pH 7.3, with 0.02% sodium azide and 50% glycerol.
Concentration:	2 mg/ml
Note:	This product is for research use only.

For Reference Only