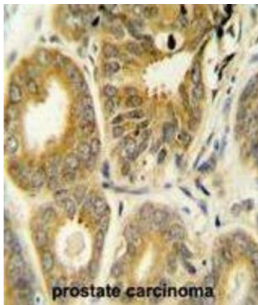


ADP-Ribosylation Factor-Like Protein 8A (ARL8A) Antibody

Catalogue No.: abx025614



ARL8A Antibody is a Rabbit Polyclonal antibody against ARL8A.

Target: ADP-Ribosylation Factor-Like Protein 8A (ARL8A)

Clonality: Polyclonal

Reactivity: Human, Mouse

Tested Applications: ELISA, WB, IHC, FCM

Host: Rabbit

Recommended dilutions: WB: 1/1000, IHC-P: 1/50 - 1/100, FCM: 1/10 - 1/50. Not tested in IHC-F. Optimal dilutions/concentrations should be determined by the end user.

Conjugation: Unconjugated

Datasheet

Version: 2.0.0
Revision date: 13 Mar 2025



Immunogen:	KLH-conjugated synthetic peptide between 116-142 amino acids from the Central region of human ARL8A.
Isotype:	IgG
Form:	Liquid
Purification:	Purified through a protein A column, followed by peptide affinity purification.
Storage:	Aliquot and store at -20°C. Avoid repeated freeze/thaw cycles.
UniProt Primary AC:	Q96BM9 (UniProt , ExPASy)
KEGG:	hsa:127829
String:	9606.ENSP00000272217
Molecular Weight:	Calculated MW: 21.4 kDa
Buffer:	PBS containing 0.09% sodium azide.
Specificity:	Predicted to react with Chicken ARL8A.
Note:	THIS PRODUCT IS FOR RESEARCH USE ONLY. NOT FOR USE IN DIAGNOSTIC, THERAPEUTIC OR COSMETIC PROCEDURES. NOT FOR HUMAN OR ANIMAL CONSUMPTION.

For Reference Only