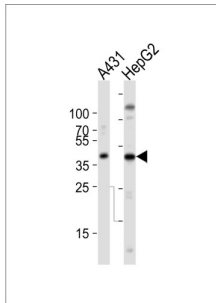
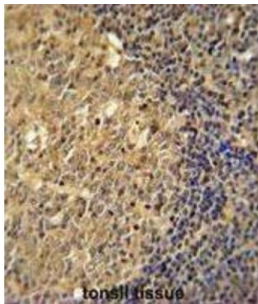


## Actin, Cytoplasmic 1 (ACTB) Antibody

Catalogue No.: abx025616

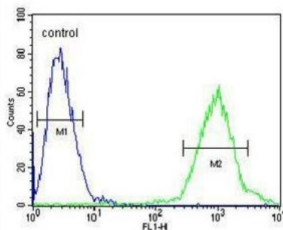


Western blot analysis of A431 (Lane 1) and HepG2 (Lane 2) cells (20 µg per lane) using Actin, Cytoplasmic 1 (ACTB) Antibody (1/1000 dilution) and HRP-conjugated Goat Anti-Rabbit IgG H+L (1/10000 dilution).



Immunohistochemistry analysis of paraffin-embedded Human tonsil tissue using Actin, Cytoplasmic 1 (ACTB) Antibody, HRP-conjugated secondary antibody and DAB staining.

### Jurkat



Flow cytometric analysis of Jurkat cells (right histogram, green) and a negative control cell (left histogram, blue) using Actin, Cytoplasmic 1 (ACTB) Antibody and FITC-conjugated Goat Anti-Rabbit secondary antibodies.

Actin, Cytoplasmic 1 (ACTB) Antibody is a Rabbit polyclonal antibody for the detection of ACTB. This gene encodes one of six different actin proteins. Actins are highly conserved proteins that are involved in cell motility, structure, and integrity. This actin is a major constituent of the contractile apparatus and one of the two nonmuscle cytoskeletal actins.

**Target:** Actin, Cytoplasmic 1 (ACTB)

**Clonality:** Polyclonal

**Reactivity:** Human

**Tested Applications:** ELISA, WB, IHC, FCM

**Host:** Rabbit

**Recommended dilutions:** WB: 1/500 - 1/1000, IHC-P: 1/50 - 1/100, FCM: 1/10 - 1/50. Not tested in IHC-F. Optimal dilutions/concentrations should be determined by the end user.

# Datasheet

Version: 4.0.0  
Revision date: 11 Mar 2025



<b>Conjugation:</b>	Unconjugated
<b>Immunogen:</b>	Recombinant protein encoding human ACTB.
<b>Isotype:</b>	IgG
<b>Form:</b>	Liquid
<b>Purification:</b>	Purified through a protein A column, followed by peptide affinity purification.
<b>Storage:</b>	Aliquot and store at -20°C. Avoid repeated freeze/thaw cycles.
<b>UniProt Primary AC:</b>	P60709 ( <a href="#">UniProt</a> , <a href="#">ExPASy</a> )
<b>NCBI Accession:</b>	NP_001092.1
<b>KEGG:</b>	hsa:60
<b>String:</b>	<a href="#">9606.ENSP00000349960</a>
<b>Molecular Weight:</b>	Calculated MW: 41.7 kDa
<b>Buffer:</b>	PBS containing 0.09% sodium azide.
<b>Specificity:</b>	Predicted to react with Mouse, Rat, Cow, Pig, Sheep, Monkey, Horse, Chicken and Xenopus ACTB.
<b>Note:</b>	THIS PRODUCT IS FOR RESEARCH USE ONLY. NOT FOR USE IN DIAGNOSTIC, THERAPEUTIC OR COSMETIC PROCEDURES. NOT FOR HUMAN OR ANIMAL CONSUMPTION.

For Reference Only