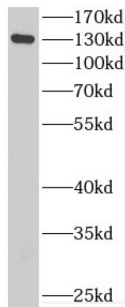


CUB Domain Containing Protein 1 (CDCP1) Antibody

Catalogue No.: abx231545



WB analysis of A549 cells, using CDCP1 antibody (1/600 dilution).

CDCP1 Antibody is a Rabbit Polyclonal against CDCP1.

Target:	CUB Domain Containing Protein 1 (CDCP1)
Clonality:	Polyclonal
Reactivity:	Human, Mouse, Rat
Tested Applications:	ELISA, WB
Host:	Rabbit
Recommended dilutions:	WB: 1/500 - 1/2000. Optimal dilutions/concentrations should be determined by the end user.
Conjugation:	Unconjugated
Immunogen:	CUB domain containing protein 1
Isotype:	IgG
Form:	Liquid
Purity:	≥ 95% (SDS-PAGE)
Purification:	Purified by immunogen affinity chromatography.
Storage:	Aliquot and store at -20°C. Avoid repeated freeze/thaw cycles.
Validity:	12 months.
UniProt Primary AC:	Q9H5V8 (UniProt , ExpASY)

Datasheet

Version: 1.0.0
Revision date: 21 Nov 2024



Gene Symbol:	CDCP1
GeneID:	64866
OMIM:	611735
HGNC:	24357
Ensembl:	ENSG00000163814
Molecular Weight:	Observed MW: 130 kDa
Buffer:	PBS, pH 7.3, with 0.02% sodium azide and 50% glycerol.
Concentration:	2 mg/ml
Note:	This product is for research use only.

For Reference Only