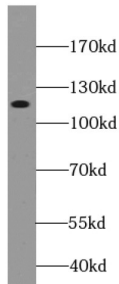


CDH10-specific Antibody

Catalogue No.: abx231546



WB analysis of rat brain tissue, using CDH10-specific antibody (1/500 dilution).

CDH10-specific Antibody is a Rabbit Polyclonal against CDH10-specific.

Target:	CDH10-specific
Clonality:	Polyclonal
Reactivity:	Human, Mouse, Rat
Tested Applications:	ELISA, WB
Host:	Rabbit
Recommended dilutions:	WB: 1/500 - 1/2000. Optimal dilutions/concentrations should be determined by the end user.
Conjugation:	Unconjugated
Immunogen:	cadherin 10, type 2 (T2-cadherin)
Isotype:	IgG
Form:	Liquid
Purity:	≥ 95% (SDS-PAGE)
Purification:	Purified by immunogen affinity chromatography.
Storage:	Aliquot and store at -20°C. Avoid repeated freeze/thaw cycles.
Validity:	12 months.
UniProt Primary AC:	Q9Y6N8 (UniProt , ExPASy)

Datasheet

Version: 1.0.0
Revision date: 14 Jan 2025



Gene Symbol: CDH10

GeneID: [1008](#)

OMIM: [604555](#)

HGNC: 1749

Ensembl: ENSG00000040731

String: [9606.ENSP00000264463](#)

Molecular Weight: Observed MW: 120 kDa

Buffer: PBS, pH 7.3, with 0.02% sodium azide and 50% glycerol.

Concentration: 2 mg/ml

Note: This product is for research use only.

For Reference Only