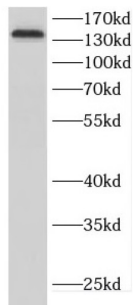


Cell Adhesion Associated, Oncogene Regulated (CDON) Antibody

Catalogue No.: abx231567



WB analysis of SH-SY5Y cells, using CDON antibody (1/1000 dilution).

CDON Antibody is a Rabbit Polyclonal against CDON.

Target:	Cell Adhesion Associated, Oncogene Regulated (CDON)
Clonality:	Polyclonal
Reactivity:	Human, Mouse, Rat
Tested Applications:	ELISA, WB
Host:	Rabbit
Recommended dilutions:	WB: 1/500 - 1/2000. Optimal dilutions/concentrations should be determined by the end user.
Conjugation:	Unconjugated
Immunogen:	Cdon homolog(Mouse)
Isotype:	IgG
Form:	Liquid
Purity:	≥ 95% (SDS-PAGE)
Purification:	Purified by immunogen affinity chromatography.
Storage:	Aliquot and store at -20°C. Avoid repeated freeze/thaw cycles.
Validity:	12 months.
UniProt Primary AC:	Q4KMG0 (UniProt , ExPASy)

Datasheet

Version: 4.0.0
Revision date: 31 Jan 2025

Gene Symbol:	CDON
GeneID:	50937
OMIM:	608707
HGNC:	17104
KEGG:	hsa:50937
Ensembl:	ENSG00000064309
String:	9606.ENSP00000376458
Molecular Weight:	Observed MW: 140 kDa
Buffer:	PBS, pH 7.3, with 0.02% sodium azide and 50% glycerol.
Concentration:	2 mg/ml
Note:	This product is for research use only.

For Reference Only