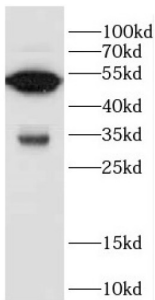
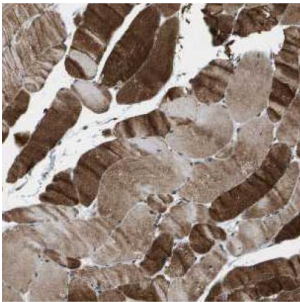


## CFLAR / FLIP Antibody

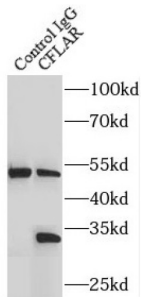
Catalogue No.: abx231621



WB analysis of Jurkat cells, using CFLAR antibody (1/1000 dilution).



IHC-P analysis of human skeletal muscle tissue, using CFLAR Antibody (1/50 dilution).



IP analysis of Jurkat cell lysate (4000 µg), using CFLAR/FLIP antibody (4 µg, detection: 1/500 dilution).

CFLAR/FLIP Antibody is a Rabbit Polyclonal against CFLAR/FLIP.

**Target:** CFLAR/FLIP

**Clonality:** Polyclonal

**Reactivity:** Human

**Tested Applications:** ELISA, WB, IHC, IF/ICC, IP

**Host:** Rabbit

**Recommended dilutions:** WB: 1/500 - 1/2000, IHC: 1/20 - 1/200, IF/ICC: 1/20 - 1/200, IP: 1/200 - 1/1000. Optimal dilutions/concentrations should be determined by the end user.

**Conjugation:** Unconjugated

# Datasheet

Version: 1.0.0  
Revision date: 27 Nov 2024



<b>Immunogen:</b>	CASP8 and FADD-like apoptosis regulator
<b>Isotype:</b>	IgG
<b>Form:</b>	Liquid
<b>Purity:</b>	≥ 95% (SDS-PAGE)
<b>Purification:</b>	Purified by immunogen affinity chromatography.
<b>Storage:</b>	Aliquot and store at -20°C. Avoid repeated freeze/thaw cycles.
<b>Validity:</b>	12 months.
<b>Molecular Weight:</b>	Observed MW: 30-35 kDa, 50-55 kDa
<b>Buffer:</b>	PBS, pH 7.3, with 0.02% sodium azide and 50% glycerol.
<b>Concentration:</b>	2 mg/ml
<b>Note:</b>	This product is for research use only.

For Reference Only