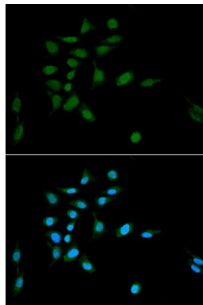


## Proteasome Subunit Alpha Type 1 (PSMA1) Antibody

Catalogue No.: abx001963



Immunofluorescence analysis of U2OS cells using PSMA1 Antibody (1/100 dilution). Blue: DAPI for nuclear staining.

PSMA1 Antibody is a Rabbit Polyclonal antibody against PSMA1. The proteasome is a multicatalytic proteinase complex with a highly ordered ring-shaped 20S core structure. The core structure is composed of 4 rings of 28 non-identical subunits; 2 rings are composed of 7 alpha subunits and 2 rings are composed of 7 beta subunits. Proteasomes are distributed throughout eukaryotic cells at a high concentration and cleave peptides in an ATP/ubiquitin-dependent process in a non-lysosomal pathway. An essential function of a modified proteasome, the immunoproteasome, is the processing of class I MHC peptides. This gene encodes a member of the peptidase T1A family, that is a 20S core alpha subunit. Alternative splicing results in multiple transcript variants encoding distinct isoforms.

<b>Target:</b>	Proteasome Subunit Alpha Type 1 (PSMA1)
<b>Clonality:</b>	Polyclonal
<b>Reactivity:</b>	Human, Mouse, Rat
<b>Tested Applications:</b>	IF/ICC
<b>Host:</b>	Rabbit
<b>Recommended dilutions:</b>	IF/ICC: 1/10 - 1/100. Optimal dilutions/concentrations should be determined by the end user.
<b>Conjugation:</b>	Unconjugated
<b>Immunogen:</b>	Recombinant fusion protein corresponding to human PSMA1
<b>Isotype:</b>	IgG
<b>Form:</b>	Liquid
<b>Purification:</b>	Purified by affinity chromatography.
<b>Storage:</b>	Aliquot and store at -20°C. Avoid repeated freeze/thaw cycles.
<b>UniProt Primary AC:</b>	P25786 ( <a href="#">UniProt</a> , <a href="#">ExPASy</a> )

# Datasheet

Version: 5.0.0  
Revision date: 04 Apr 2025



**Gene Symbol:** PSMA1

**GeneID:** [5682](#)

**NCBI Accession:** NP\_002777.1

**KEGG:** hsa:5682

**String:** [9606.ENSP00000414359](#)

**Buffer:** PBS, pH 7.3, containing 0.02% sodium azide, 50% glycerol.

**Concentration:** 1 mg/ml

**Note:** THIS PRODUCT IS FOR RESEARCH USE ONLY. NOT FOR USE IN DIAGNOSTIC, THERAPEUTIC OR COSMETIC PROCEDURES. NOT FOR HUMAN OR ANIMAL CONSUMPTION.

For Reference Only