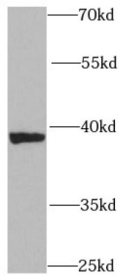
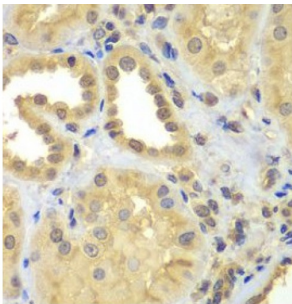


Cytosolic Iron-Sulfur Assembly Component 1 (CIAO1) Antibody

Catalogue No.: abx231704



WB analysis of HepG2 cells, using CIAO1 antibody (1/1000 dilution).



IHC-P analysis of human kidney tissue, using CIAO1 Antibody (1/100 dilution).

CIAO1 Antibody is a Rabbit Polyclonal against CIAO1.

Target:	Cytosolic Iron-Sulfur Assembly Component 1 (CIAO1)
Clonality:	Polyclonal
Reactivity:	Human, Mouse, Rat
Tested Applications:	ELISA, WB, IHC
Host:	Rabbit
Recommended dilutions:	WB: 1/500 - 1/2000, IHC: 1/50 - 1/200. Optimal dilutions/concentrations should be determined by the end user.
Conjugation:	Unconjugated
Immunogen:	cytosolic iron-sulfur protein assembly 1 homolog (<i>S. cerevisiae</i>)
Isotype:	IgG
Form:	Liquid
Purity:	≥ 95% (SDS-PAGE)

Datasheet

Version: 1.0.0
Revision date: 23 Nov 2024



Purification:	Purified by immunogen affinity chromatography.
Storage:	Aliquot and store at -20°C. Avoid repeated freeze/thaw cycles.
Validity:	12 months.
UniProt Primary AC:	O76071 (UniProt , ExPASy)
KEGG:	hsa:9391
String:	9606.ENSP00000418287
Molecular Weight:	Observed MW: 38 kDa
Buffer:	PBS, pH 7.3, with 0.02% sodium azide and 50% glycerol.
Concentration:	2 mg/ml
Note:	This product is for research use only.

For Reference Only