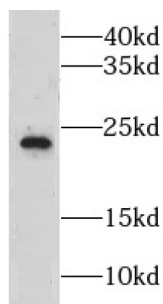


Tetranectin (CLEC3B) Antibody

Catalogue No.: abx231752



WB analysis of Human plasma tissue, using CLEC3B antibody (1/1000 dilution).

CLEC3B Antibody is a Rabbit Polyclonal against CLEC3B.

Target:	Tetranectin (CLEC3B)
Clonality:	Polyclonal
Reactivity:	Human, Mouse
Tested Applications:	ELISA, WB
Host:	Rabbit
Recommended dilutions:	WB: 1/500 - 1/2000. Optimal dilutions/concentrations should be determined by the end user.
Conjugation:	Unconjugated
Immunogen:	C-type lectin domain family 3, member B
Isotype:	IgG
Form:	Liquid
Purity:	≥ 95% (SDS-PAGE)
Purification:	Purified by immunogen affinity chromatography.
Storage:	Aliquot and store at -20°C. Avoid repeated freeze/thaw cycles.
Validity:	12 months.
UniProt Primary AC:	P05452 (UniProt , ExpASY)

Datasheet

Version: 4.0.0

Revision date: 20 Mar 2025



KEGG: hsa:7123

String: [9606.ENSP00000296130](#)

Molecular Weight: Observed MW: 22 kDa

Buffer: PBS, pH 7.3, with 0.02% sodium azide and 50% glycerol.

Concentration: 2 mg/ml

Note: THIS PRODUCT IS FOR RESEARCH USE ONLY. NOT FOR USE IN DIAGNOSTIC, THERAPEUTIC OR COSMETIC PROCEDURES. NOT FOR HUMAN OR ANIMAL CONSUMPTION.

For Reference Only