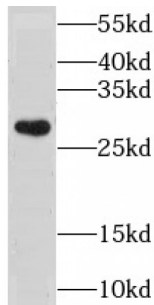
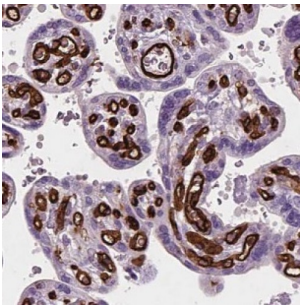


## Chloride Intracellular Channel Protein 3 (CLIC3) Antibody

Catalogue No.: abx231760



WB analysis of HeLa cells, using CLIC3 antibody (1/800 dilution).



IHC-P analysis of human placenta tissue, using CLIC3 antibody (1/50 dilution).

CLIC3 Antibody is a Rabbit Polyclonal against CLIC3.

<b>Target:</b>	Chloride Intracellular Channel Protein 3 (CLIC3)
<b>Clonality:</b>	Polyclonal
<b>Reactivity:</b>	Human, Mouse, Rat
<b>Tested Applications:</b>	ELISA, WB, IHC, IF/ICC
<b>Host:</b>	Rabbit
<b>Recommended dilutions:</b>	WB: 1/500 - 1/2000, IHC: 1/20 - 1/200, IF/ICC: 1/20 - 1/200. Optimal dilutions/concentrations should be determined by the end user.
<b>Conjugation:</b>	Unconjugated
<b>Immunogen:</b>	chloride intracellular channel 3
<b>Isotype:</b>	IgG
<b>Form:</b>	Liquid
<b>Purity:</b>	≥ 95% (SDS-PAGE)

# Datasheet

Version: 2.0.0  
Revision date: 23 May 2024



<b>Purification:</b>	Purified by immunogen affinity chromatography.
<b>Storage:</b>	Aliquot and store at -20°C. Avoid repeated freeze/thaw cycles.
<b>Validity:</b>	12 months.
<b>UniProt Primary AC:</b>	O95833 ( <a href="#">UniProt</a> , <a href="#">ExPASy</a> )
<b>Gene Symbol:</b>	CLIC3
<b>GeneID:</b>	<a href="#">9022</a>
<b>OMIM:</b>	<a href="#">606533</a>
<b>HGNC:</b>	2064
<b>KEGG:</b>	hsa:9022
<b>Ensembl:</b>	ENSG00000169583
<b>String:</b>	<a href="#">9606.ENSP00000419378</a>
<b>Molecular Weight:</b>	Observed MW: 27-32 kDa
<b>Buffer:</b>	PBS, pH 7.3, with 0.02% sodium azide and 50% glycerol.
<b>Concentration:</b>	2 mg/ml
<b>Note:</b>	This product is for research use only.

For Reference Only