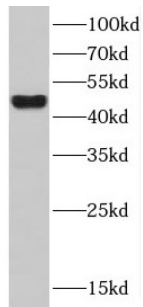
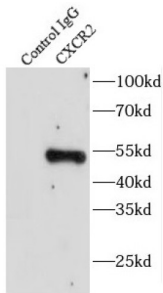


Interleukin 8 Receptor Beta / IL8RB (CXCR2) Antibody

Catalogue No.: abx232100



WB analysis of L02 cells, using CXCR2 antibody (1/2000 dilution).



IP analysis of HepG2 cell lysate (3200 µg), using CXCR2 antibody (4 µg, detection: 1/1000 dilution).

CXCR2 Antibody is a Rabbit Polyclonal against CXCR2.

Target: Interleukin 8 Receptor Beta / IL8RB (CXCR2)

Clonality: Polyclonal

Reactivity: Human

Tested Applications: ELISA, WB, IF/ICC, IP

Host: Rabbit

Recommended dilutions: WB: 1/500 - 1/2000, IF/ICC: 1/20 - 1/200, IP: 1/200 - 1/1000. Optimal dilutions/concentrations should be determined by the end user.

Conjugation: Unconjugated

Immunogen: interleukin 8 receptor, beta

Isotype: IgG

Form: Liquid

Purity: ≥ 95% (SDS-PAGE)

Datasheet

Version: 1.0.0
Revision date: 13 Mar 2025



Purification:	Purified by immunogen affinity chromatography.
Storage:	Aliquot and store at -20°C. Avoid repeated freeze/thaw cycles.
Validity:	12 months.
UniProt Primary AC:	P25025 (UniProt , ExPASy)
Gene Symbol:	CXCR2
GeneID:	3579
KEGG:	hsa:3579
String:	9606.ENSP00000319635
Molecular Weight:	Observed MW: 45-50 kDa
Buffer:	PBS, pH 7.3, with 0.02% sodium azide and 50% glycerol.
Concentration:	2 mg/ml
Note:	THIS PRODUCT IS FOR RESEARCH USE ONLY. NOT FOR USE IN DIAGNOSTIC, THERAPEUTIC OR COSMETIC PROCEDURES. NOT FOR HUMAN OR ANIMAL CONSUMPTION.

For Reference Only