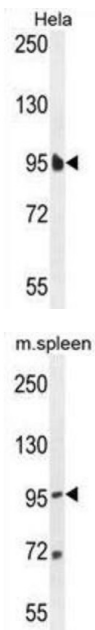


Elongation Factor Tu GTP-Binding Domain-Containing Protein 1 (EFTUD1) Antibody

Catalogue No.: abx025691



EFTUD1 Antibody is a Rabbit Polyclonal antibody against EFTUD1.

Target: Elongation Factor Tu GTP-Binding Domain-Containing Protein 1 (EFTUD1)

Clonality: Polyclonal

Reactivity: Human, Mouse

Tested Applications: ELISA, WB, IHC, FCM

Host: Rabbit

Recommended dilutions: WB: 1/1000, IHC-P: 1/50 - 1/100, FCM: 1/10 - 1/50. Not tested in IHC-F. Optimal dilutions/concentrations should be determined by the end user.

Datasheet

Version: 1.0.0
Revision date: 17 Feb 2025



Conjugation:	Unconjugated
Immunogen:	KLH-conjugated synthetic peptide between 1062-1090 amino acids from the C-terminal region of human EFTUD1.
Isotype:	IgG
Form:	Liquid
Purification:	Purified through a protein A column, followed by peptide affinity purification.
Storage:	Aliquot and store at -20°C. Avoid repeated freeze/thaw cycles.
UniProt Primary AC:	Q7Z2Z2 (UniProt , ExPASy)
Gene Symbol:	EFL1
KEGG:	hsa:79631
String:	9606.ENSP00000268206
Molecular Weight:	Calculated MW: 125 kDa
Buffer:	PBS containing 0.09% sodium azide.
Note:	This product is for research use only.

For Reference Only