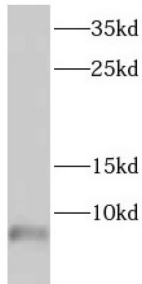


# Datasheet

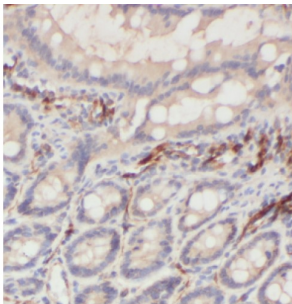
Version: 1.0.0  
Revision date: 23 Nov 2024

## Defensin Alpha 1, Neutrophil (DEFA1) Antibody

Catalogue No.: abx232326



WB analysis of HepG2 cells, using DEFA1 antibody (1/300 dilution).



IHC-P analysis of human small intestine tissue, using DEFA1 Antibody (1/50 dilution).

DEFA1 Antibody is a Rabbit Polyclonal against DEFA1.

**Target:** Defensin Alpha 1, Neutrophil (DEFA1)

**Clonality:** Polyclonal

**Reactivity:** Human

**Tested Applications:** ELISA, WB, IHC

**Host:** Rabbit

**Recommended dilutions:** WB: 1/500 - 1/2000, IHC: 1/20 - 1/200. Optimal dilutions/concentrations should be determined by the end user.

**Conjugation:** Unconjugated

**Immunogen:** defensin, alpha 1

**Isotype:** IgG

**Form:** Liquid

**Purity:** ≥ 95% (SDS-PAGE)

# Datasheet

Version: 1.0.0  
Revision date: 23 Nov 2024



<b>Purification:</b>	Purified by immunogen affinity chromatography.
<b>Storage:</b>	Aliquot and store at -20°C. Avoid repeated freeze/thaw cycles.
<b>Validity:</b>	12 months.
<b>UniProt Primary AC:</b>	P59665 ( <a href="#">UniProt</a> , <a href="#">ExpASY</a> )
<b>Gene Symbol:</b>	DEFA1
<b>KEGG:</b>	hsa:1667, hsa:728358
<b>String:</b>	<a href="#">9606.ENSP00000372139</a>
<b>Molecular Weight:</b>	Observed MW: 6 kDa
<b>Buffer:</b>	PBS, pH 7.3, with 0.02% sodium azide and 50% glycerol.
<b>Concentration:</b>	2 mg/ml
<b>Note:</b>	This product is for research use only.

For Reference Only