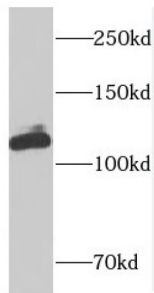


DIS3-Like Exonuclease 1 (DIS3L) Antibody

Catalogue No.: abx232395



WB analysis of K-562 cells, using DIS3L antibody (1/100 dilution).

DIS3L Antibody is a Rabbit Polyclonal against DIS3L.

Target:	DIS3-Like Exonuclease 1 (DIS3L)
Clonality:	Polyclonal
Reactivity:	Human
Tested Applications:	ELISA, WB
Host:	Rabbit
Recommended dilutions:	WB: 1/500 - 1/2000. Optimal dilutions/concentrations should be determined by the end user.
Conjugation:	Unconjugated
Immunogen:	DIS3 mitotic control homolog(S. cerevisiae)-like
Isotype:	IgG
Form:	Liquid
Purity:	≥ 95% (SDS-PAGE)
Purification:	Purified by immunogen affinity chromatography.
Storage:	Aliquot and store at -20°C. Avoid repeated freeze/thaw cycles.
Validity:	12 months.
UniProt Primary AC:	Q8TF46 (UniProt , ExPASy)

Datasheet

Version: 2.0.0
Revision date: 13 Mar 2025



Gene Symbol: DIS3L

GeneID: [115752](#)

OMIM: [614183](#)

HGNC: 28698

KEGG: hsa:115752

Ensembl: ENSG00000166938

String: [9606.ENSP00000321711](#)

Molecular Weight: Observed MW: 121 kDa

Buffer: PBS, pH 7.3, with 0.02% sodium azide and 50% glycerol.

Concentration: 2 mg/ml

Note: THIS PRODUCT IS FOR RESEARCH USE ONLY. NOT FOR USE IN DIAGNOSTIC, THERAPEUTIC OR COSMETIC PROCEDURES. NOT FOR HUMAN OR ANIMAL CONSUMPTION.

For Reference Only