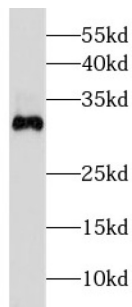
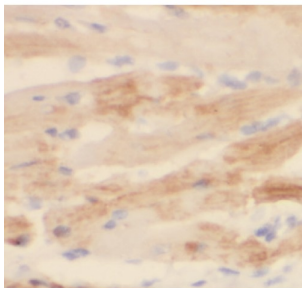


## Dickkopf 2 Homolog (Xenopus Laevis) (DKK2) Antibody

Catalogue No.: abx232402



WB analysis of mouse skeletal muscle tissue, using DKK2 antibody (1/500 dilution).



IHC-P analysis of human cervix tissue, using DKK2 antibody (1/50 dilution).

DKK2 Antibody is a Rabbit Polyclonal against DKK2.

**Target:** Dickkopf 2 Homolog (Xenopus Laevis) (DKK2)**Clonality:** Polyclonal**Reactivity:** Human, Mouse, Rat**Tested Applications:** ELISA, WB, IHC**Host:** Rabbit**Recommended dilutions:** WB: 1/500 - 1/1000, IHC: 1/20 - 1/200. Optimal dilutions/concentrations should be determined by the end user.**Conjugation:** Unconjugated**Immunogen:** dickkopf homolog 2**Isotype:** IgG**Form:** Liquid**Purity:** ≥ 95% (SDS-PAGE)

# Datasheet

Version: 1.0.0  
Revision date: 27 Nov 2024



<b>Purification:</b>	Purified by immunogen affinity chromatography.
<b>Storage:</b>	Aliquot and store at -20°C. Avoid repeated freeze/thaw cycles.
<b>Validity:</b>	12 months.
<b>UniProt Primary AC:</b>	Q9UBU2 ( <a href="#">UniProt</a> , <a href="#">ExPASy</a> )
<b>String:</b>	<a href="#">9606.ENSP00000285311</a>
<b>Molecular Weight:</b>	Observed MW: 32 kDa
<b>Buffer:</b>	PBS, pH 7.3, with 0.02% sodium azide and 50% glycerol.
<b>Concentration:</b>	2 mg/ml
<b>Note:</b>	This product is for research use only.

For Reference Only