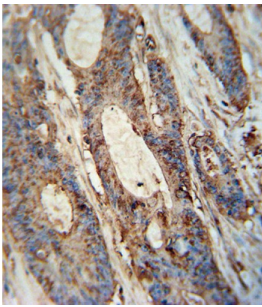


FAM46A Antibody

Catalogue No.: abx025702



WB analysis of CEM cell lysates.



IHC-P analysis of human colon carcinoma, with DAB staining.

FAM46A Antibody is a Rabbit Polyclonal antibody against FAM46A.

Target:	FAM46A
Clonality:	Polyclonal
Reactivity:	Human
Tested Applications:	ELISA, WB, IHC
Host:	Rabbit
Recommended dilutions:	WB: 1/1000, IHC-P: 1/10 - 1/50. Not tested in IHC-F. Optimal dilutions/concentrations should be determined by the end user.
Conjugation:	Unconjugated
Immunogen:	KLH-conjugated synthetic peptide between 89-117 amino acids from the Central region of human FAM46A.
Isotype:	IgG
Form:	Liquid
Purification:	Purified through a protein A column, followed by peptide affinity purification.

Datasheet

Version: 4.0.0
Revision date: 12 Mar 2025



Storage: Aliquot and store at -20°C. Avoid repeated freeze/thaw cycles.

UniProt Primary AC: Q96IP4 ([UniProt](#), [ExpASY](#))

Gene Symbol: TENT5A

KEGG: hsa:55603

String: [9606.ENSP00000318298](#)

Molecular Weight: Calculated MW: 49.7 kDa

Buffer: PBS containing 0.09% sodium azide.

Note: THIS PRODUCT IS FOR RESEARCH USE ONLY. NOT FOR USE IN DIAGNOSTIC, THERAPEUTIC OR COSMETIC PROCEDURES. NOT FOR HUMAN OR ANIMAL CONSUMPTION.

For Reference Only