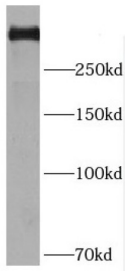
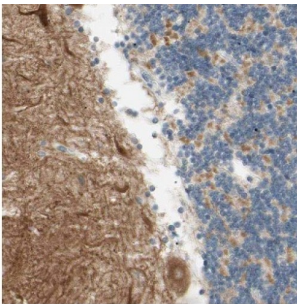


DmX-Like Protein 2 (DMXL2) Antibody

Catalogue No.: abx232430



WB analysis of mouse brain tissue, using DMXL2 antibody (1/200 dilution).



IHC-P analysis of human cerebellum tissue, using DMXL2 Antibody (1/50 dilution).

DMXL2 Antibody is a Rabbit Polyclonal against DMXL2.

Target:	DmX-Like Protein 2 (DMXL2)
Clonality:	Polyclonal
Reactivity:	Human, Mouse, Rat
Tested Applications:	ELISA, WB, IHC
Host:	Rabbit
Recommended dilutions:	WB: 1/500 - 1/2000, IHC: 1/20 - 1/200. Optimal dilutions/concentrations should be determined by the end user.
Conjugation:	Unconjugated
Immunogen:	Dmx-like 2
Isotype:	IgG
Form:	Liquid
Purity:	≥ 95% (SDS-PAGE)

Datasheet

Version: 1.0.0
Revision date: 23 Feb 2025



Purification:	Purified by immunogen affinity chromatography.
Storage:	Aliquot and store at -20°C. Avoid repeated freeze/thaw cycles.
Validity:	12 months.
UniProt Primary AC:	Q8TDJ6 (UniProt , ExPASy)
Gene Symbol:	DMXL2
GeneID:	23312
OMIM:	612186
HGNC:	2938
KEGG:	hsa:23312
Ensembl:	ENSG00000104093
String:	9606.ENSP00000441858
Molecular Weight:	Observed MW: 340 kDa
Buffer:	PBS, pH 7.3, with 0.02% sodium azide and 50% glycerol.
Concentration:	2 mg/ml
Note:	This product is for research use only.

For Reference Only